

# Parental Survey 2022

Thank you to the parents and carers who responded.

## 261 Total responses

Respondents completed the questions that were relevant to their family circumstances.

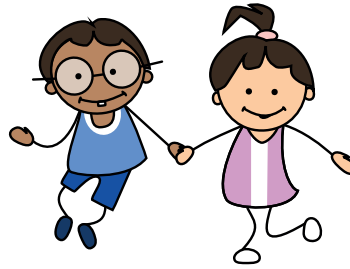


**137** using funded Early Learning and Childcare.

**113 (82.5%)** said Early Learning and Childcare meets their needs

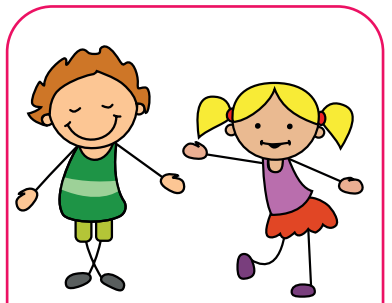


**15%** talked about need for more wraparound care across the region.



**25 (18%)** families using Funded Early Learning and Childcare said it does not meet their needs, reasons included lack of availability of extended childcare and cost.

## FEEDBACK



**173 (66%)** families who **do not** currently use Out of School Care said they would use Out of School Care if it was available.

**114** families reported that they **would like this** provided in school and indicated they would use breakfast clubs, after school care and provision during holidays

Of the 70 families not receiving Funded Early Learning and Childcare but accessing childcare

**43%** choose the provider as it is close to home

**17%** choose the provider for its flexibility and all round care

**14%** because it was close to work or training.

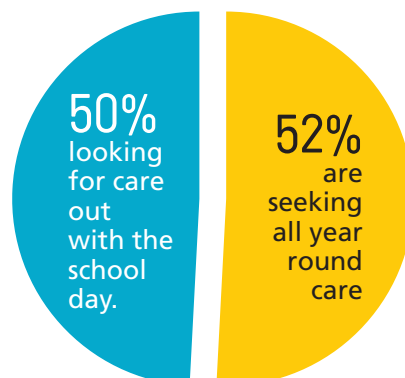
Of the families receiving Funded Early Learning and Childcare

**Most** families choose providers close to their home (**59%**)

**Flexible** services and providers offering all year round care (**19%**)

**141** families responded in relation to future needs for Early Learning and Childcare.

Around half of the respondents indicated they would use Local Authority with the remaining choosing Private/Voluntary/Independent Providers and Childminders.



261 families responded in relation to Out of School Care.

**37** families currently use Out of School Care provision.

**25 (68%)** reported that it meets their needs