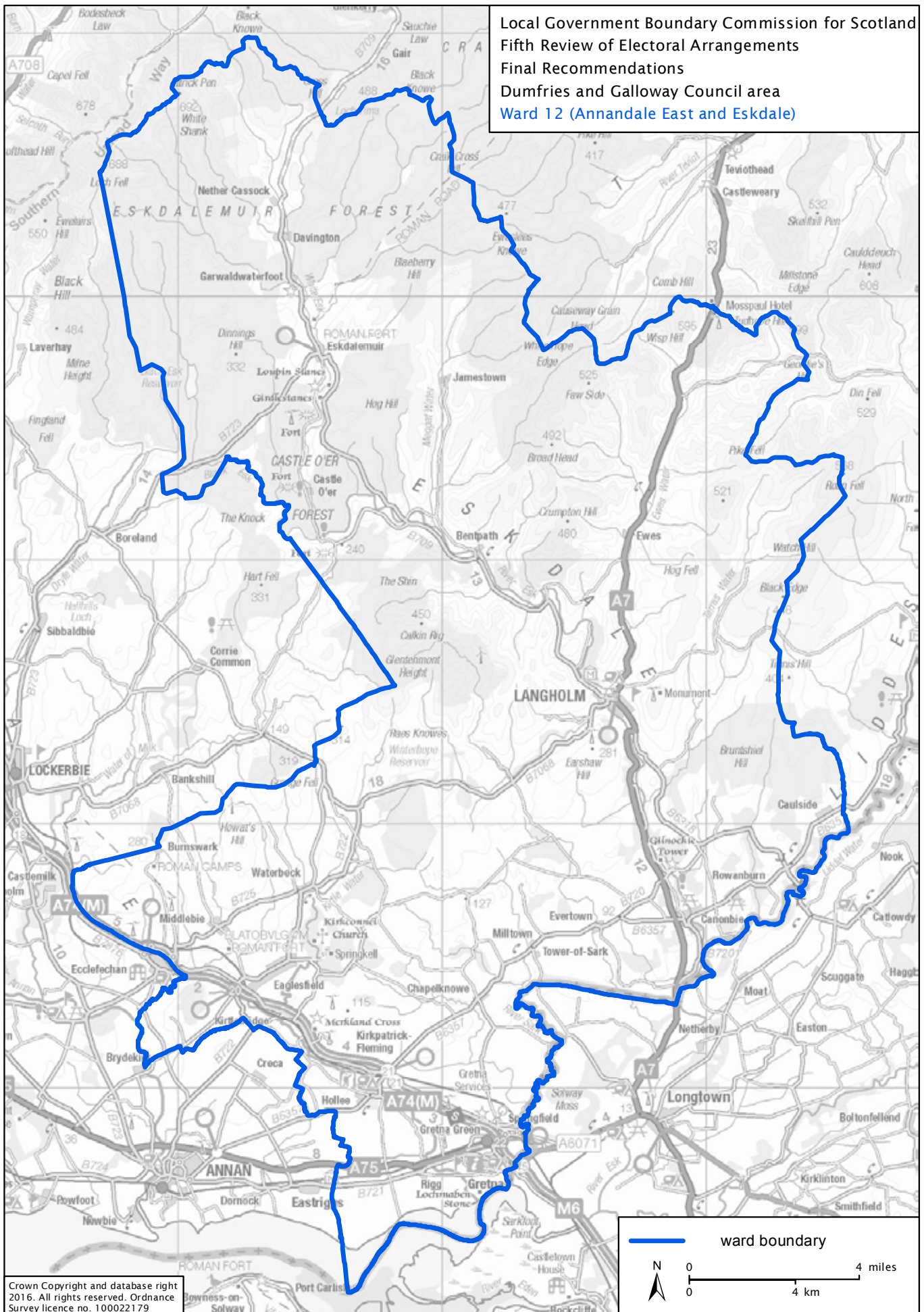


Annandale East and Eskdale **Ward 12 Profile**



Annandale East and Eskdale **Ward 12 Profile**

Local Government Boundary Commission for Scotland
Fifth Review of Electoral Arrangements
Final Recommendations
Dumfries and Galloway Council area
Ward 12 (Annandale East and Eskdale)



Crown Copyright and database right 2016. All rights reserved. Ordnance Survey licence no. 100022179

Key statistics - Settlements

Some details about the main towns and villages in the Annandale East and Eskdale Ward are given below

Canonbie contains a number of facilities including a post office/shop, hall, primary school and a hotel. The settlement is identified as a Conservation Area, is characterised by the River Esk and has a population of 390.

Eaglesfield has a population of 691 and is located adjacent to the A74(M) within the Gretna-Lockerbie-Annan regeneration corridor. Its facilities include a post office/shop, hall and primary school. Eaglesfield is identified as a Local Centre within the Annan Housing Market Area.

The Gretna Border settlement includes Gretna, Gretna-Green and Springfield and is identified as a District Centre in the Annan Housing Market Area. Gretna Border forms part of the Gretna-Lockerbie-Annan regeneration corridor, is strategically located adjacent to the A74(M) and A75, is on the Carlisle to Glasgow train route and has a population of 2,700.

Gretna is a planned village built during the 1st World War in 1915 to accommodate workers in munitions factories. Today, the majority of shops and facilities, including the post office, library and registry office, are located along Central Avenue in Gretna. Gretna Border contains two primary schools, one in Gretna and the other in Springfield. Gretna-Green and Gretna Gateway Outlet Village are major tourist attractions with Gretna-Green historically famous as a wedding venue.

Langholm has a population of 2,227 and is defined as a District Centre in the Eskdale Housing Market Area. It is strategically located on the A7. The settlement contains a number of facilities including a primary and secondary school, a small supermarket and a number of independent shops, public houses and other small businesses. Langholm is characterised by the River Esk running through the settlement. Its floodplain limits development potential as do the hills that surround the settlement. Langholm is a Conservation Area and falls within the Langholm Hills Regional Scenic Area.

Council and Partners Facilities

Primary Schools

Springfield Primary School	18
Gretna Primary School	335
Canonbie Primary School	70
Eaglesfield Primary School	54
Langholm Primary School	178
Kirkpatrick Fleming Primary School	67
Hottsbridge Primary School	28

Secondary Schools

Langholm Academy	224
------------------	-----

Customer Service Centres

Gretna Customer Service Centre
Gretna Registry Office
Langholm Customer Service Centre

Burial Grounds

Canonbie
Carruthers (Waterbeck)
Eskdalemuir
Ewes
Gretna Parish
Half Morton
Kirkpatrick Fleming
Langholm
Middlebie
Rigg
Wauchope
Westerkirk

Parks and Open Spaces

Kilngreen, Langholm
Braehead Play Park, Langholm
Academy Place, Langholm
Buccleuch Park, Langholm
Rosevale Play Area, Langholm
Ewes
Harelaw
Rowanburn
Canonbie Playing Field
Evertown
Kirkpatrick Fleming Playing Field
Grahamsfield, Kirkpatrick Fleming
Kirtlebridge
Bowerbank, Eaglesfield
Eaglesfield Playing Field
Waterbeck
Middlebie
Springfield School
Gretna Community Centre
Prefabs Playing Field, Gretna

NHS Facilities

Gretna Surgery
Langholm Medical Partnership, Health Centre
Thomas Hope Hospital

Police Scotland Facilities

Gretna Police Station
Langholm Police Office

Scottish Fire and Rescue Service Facilities

Langholm Fire Station
Gretna Fire Station

Key Council Projects

Borderlands Growth Deal Initiative

The Borderlands Growth Deal Initiative brings together the five cross-border local authorities of Carlisle City Council, Cumbria Council, Dumfries and Galloway Council, Northumberland County Council and Scottish Borders Council to promote the economic growth and competitiveness of this area which straddles the Scotland-England border.

The Dumfries and Galloway Regional Economic Strategy and the South of Scotland Competitiveness Strategy highlight the importance of the Borderlands as a strategic economic development opportunity. In particular the M74 / M6 corridor, which includes the Chapelcross site, is a key economic driver for growth both in the region and nationally.

A study jointly commissioned by the Local Authority partners to develop a framework from which the initiative could be progressed. The commission focused on four themes:

- Analysis and objective view of the current work being undertaken by the local authorities.
- Consideration of the appropriateness of developing a regional growth model approach for the Borderlands area, given the analysis above and governance for such model.
- Economic appraisal of current position; evidence for the business case for the key projects; demonstrate that these projects are worth doing; their potential impact on GVA uplift.
- Development of clear recommendations and next steps for a Borderlands proposal; taking into consideration how future actions might play into existing structures.

The completed report is The Borderlands Inclusive Growth Initiative: Framework for Unlocking our Potential and this identifies a number of infrastructure and place based projects which will support economic growth. The framework and actions arising from it will be the foundation for bids to both UK and Scottish Governments for capital investment to deliver strategic infrastructure projects.

Key Partner Organisation Projects

Health and Social Care

Esk Valley - developing a business case with communities to support the vision of how health and social care services could be reconfigured in the valley.

One Teams - One Team approach across all parts of Annandale and Eskdale ensuring services and support are very localised and community assets are being fully utilised.

Forward Looking Planning - working with people at a much earlier stage to identify and record their wishes for future care. This encourages people to take responsibility much earlier and to think about their options for the future.

Community Link Programme - focuses on prevention and earlier intervention, helping people to identify and work towards meeting their personal goals and aspirations. The service can often reach people who are in need but who do not engage with existing services. The programme can greatly increase confidence and reconnect people with their community.

Community Councils and Community Associations

Eskdalemuir Community Council - Established

Gretna and Rigg Community Council - Established

Springfield and Gretna Green Community Council - Established

Canonbie and District Community Council - Established

Langholm, Ewes and Westerkirk Community Council - Established

Kirtle and Eaglesfield Community Council - Established

Kirkpatrick Fleming and District - Established

Middlebie and Waterbeck Community Council - Established

Annandale and Eskdale Federation of Community Councils

Community Resilience Groups

Springfield and Gretna Green

Kirtle and Eaglesfield

Langholm, Ewes and Westerkirk

Community Asset Transfers

Richard Greenhow Centre, Gretna - March 2018

Buccleuch Hall, Langholm - March 2018

Langholm Old Library - Agreed February 2017

Langholm Quay - Agreed February 2017

Windfarms and Community Benefit Monies

Minsca Windfarm

Approx **£93,000** annually between 24 communities;

Corrie Parish Hall	£10,896.34
Middlebie and Waterbeck CC	£21,792.68
Tundergarth Village Hall	£10,896.34
Brydekirk and District	£2,075.49
Canonbie and District	£2,075.49
Cummertees and Cummertrees West	£2,075.49
Dalton and Carrutherstown	£2,075.49
Eastriggs, Dornock and Creca	£2,075.49
Eskdalemuir	£2,075.49
Gretna and Rigg	£2,075.49
Hoddom and Ecclefechan	£2,075.49
Hutton Community Partnership	£2,075.49
Johnstone	£2,075.49
Kirkpatrick Fleming and District	£2,075.49
Kirtle and Eaglesfield	£2,075.49
Langholm, Ewes and Westerkirk	£2,075.49
Lockerbie and District	£2,075.49
Royal Four Towns	£2,075.49
Ruthwell and Clarencefield	£2,075.49
Springfield and Gretna Green	£2,075.49
Templand and District	£2,075.49
The Royal Burgh of Annan	£2,075.49
The Royal Burgh of Lochmaben	£2,075.49
Wamphray	£2,075.49

The Annandale and Nithsdale community benefit company distributes monies both regionally on application and also to Community Councils / community groups where no Community Council is established. <http://www.ancbc.co.uk/community-council-local-grants-scheme/>

Community Plans

Gretna and Rigg, Springfield and Gretna Green and Kirkpatrick Fleming and District

Canonbie and District

Elected Members

Karen Carruthers
Scottish Conservative and Unionist

Archie Dryburgh
Scottish Labour

Ronnie Tait
Scottish Conservative and Unionist

MPs, MSPs and MSYP

MP David Mundell
Scottish Conservative and Unionist

MSP Oliver Mundell
Scottish Conservative and Unionist

MSYP Mel Main Dumfriesshire
Emily Davies Dumfriesshire

Ward Officer
Stuart Hamilton

Tel 07881 008 230
Stuart.Hamilton2@dumgal.gov.uk

Annandale East and Eskdale

Electorate 8,538



Electorate does not equal population. Source - Boundary Commission

Employment and Economic Growth

% of adults receiving out of work benefits



Adults aged 16 to 64 - 3 year trend

% of children living in poverty

4 year trend



Rate of depopulation



10 year trend (inverse indicator)

	Current	Trend	Current	Trend	Current	Trend
Gretna and Eastriggs (AS)*	13.90%	+0.0%	14.60%	+1.90%	98.20%	-0.80%
Langholm and Canonbie	11.90%	-0.1%	12.40%	+2.10%	103.90%	+3.30%

Positive Destinations



Positive destinations

The percentage of school leavers who, within three months of leaving school, enter higher education, further education, employment or training - 5 year trend

	Current	Trend	Current	Trend
Gretna and Eastriggs (AS)*	93.90%	+2.80%	195	+29
Langholm and Canonbie	97.70%	+6.00%	218	+20



S4 Tarriff

Scottish average 298

National benchmarking focusing on attainment of pupils following S4 S5 or S6. Qualifications are awarded tariff points based on its SCQF level, credit points and the grade achieved by the pupil -10 year trend

Health and Wellbeing

Early mortality rate

Rate of death for persons under the age of 75 - 5 year trend



Unplanned hospital admissions

Accident and Emergency attendances per 100,000 head of population - 10 year trend



	Current	Trend	Current	Trend
Gretna and Eastriggs (AS)*	260	-62	10386	+1555
Langholm and Canonbie	195	-114	8168	-4683

Safer, Stronger Communities

Crime Rate

Number of crimes per 10,000 head of population - 3 year trend



	Current	Trend
Gretna and Eastriggs (AS)*	354	-13
Langholm and Canonbie	76	-64

*The statistical information presented for each of the detailed outcomes is sourced from the Community Planning Outcome Profiling tool (CPOP). However slight anomalies exist relating to Wards 10, 11 and 12. Intermediary data zones do not match identically the geographic nature of electoral wards. The community of Eskdalemuir geographically sits within Ward 12 (Annandale East and Eskdale) but for CPOP is attached to the Moffat community which is in Ward 11. Similarly Eastriggs is geographically in Ward 10 (Annandale South) but for CPOP is attached to the Gretna community which is in Ward 12. In such cases, the statistical information cannot be disaggregated further to allow the information to be presented differently.

If you would like some help understanding this or need it in another format please contact 030 33 33 3000

**Contact: Community Planning and Engagement
Municipal Chambers,
Buccleuch Street, Dumfries DG1 2AD
Telephone: 030 33 33 3000**

Agreed

October 2017