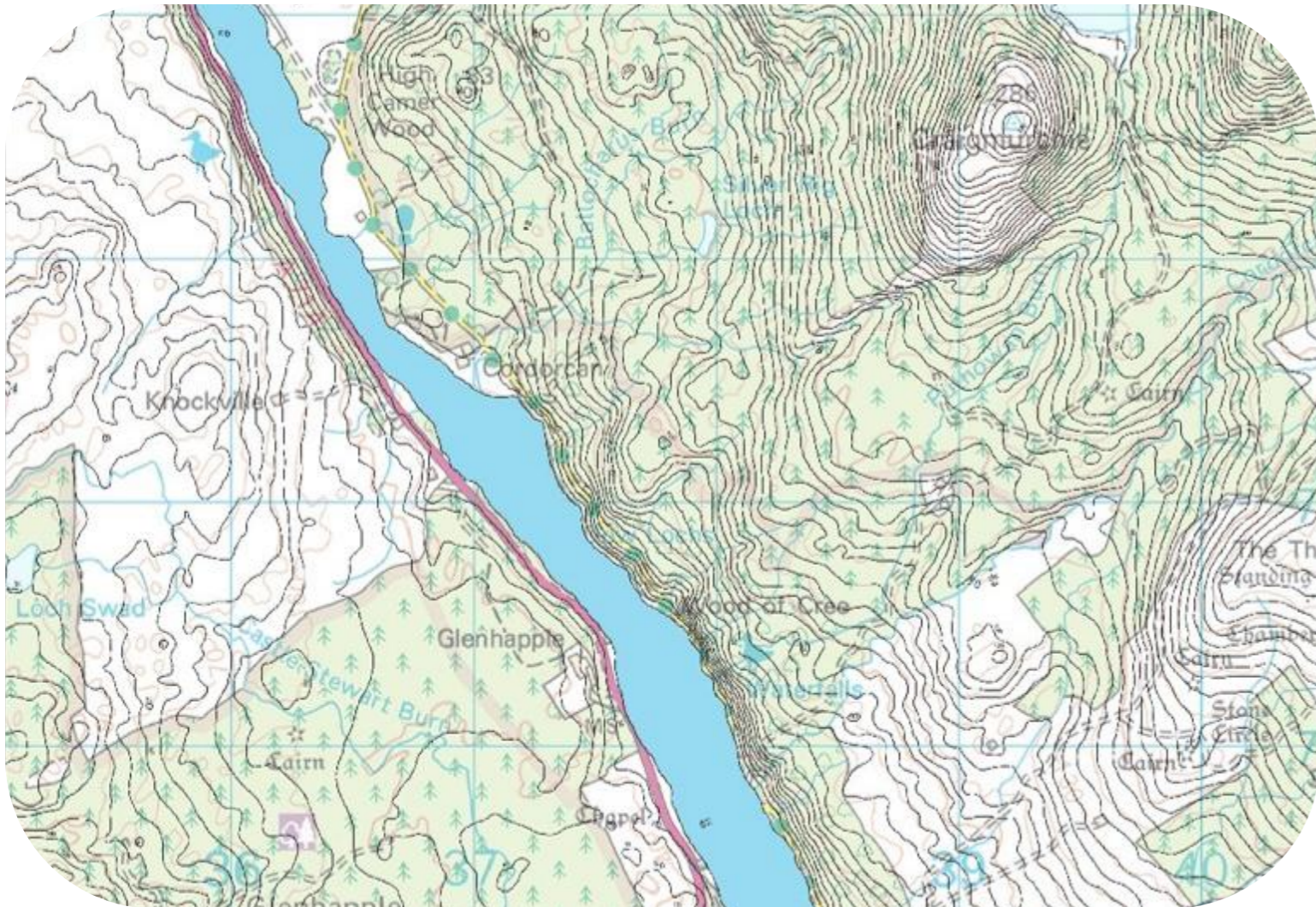


Board 6: Long-List of Options (1 of 3)



Options Considering Upstream Storage

- Option 1: Upstream Storage at Glenhapple
- Option 2: Upstream Storage at Linloskin Bridge
- Option 3: Upstream Storage at Frankie Hill
- Option 4: Installation of Obstructions on the River Cree
- Option 5: Installation of Obstructions on Penkiln Burn

See Board 7 for locations



Options Involving Direct Defences

- Option 6: Construct Direct Defences

See Board 8 for locations



Options at the A75 Embankment

- Option 7: Increase Flow Area Beneath A75 Bridge
- Option 8: Removal of A75 Embankment
- Option 9: Increase Flood Relief Culvert Capacity

See Board 8 for locations



Options in the River Channel

- Option 10: Removal of Gravel Berm
- Option 11: Removal of In-Line Weir (Town)
- Option 12: Removal of In-Line Weir (Upstream)
- Option 13: Reconnect Penkiln Burn & River Cree Upstream
- Option 14: Remove Mill Island
- Option 15: Remove Sediment Around Key Structures
- Option 16: Divert Penkiln Burn
- Option 17: Dredging of River
- Option 18: Disconnect Former Mill Lade

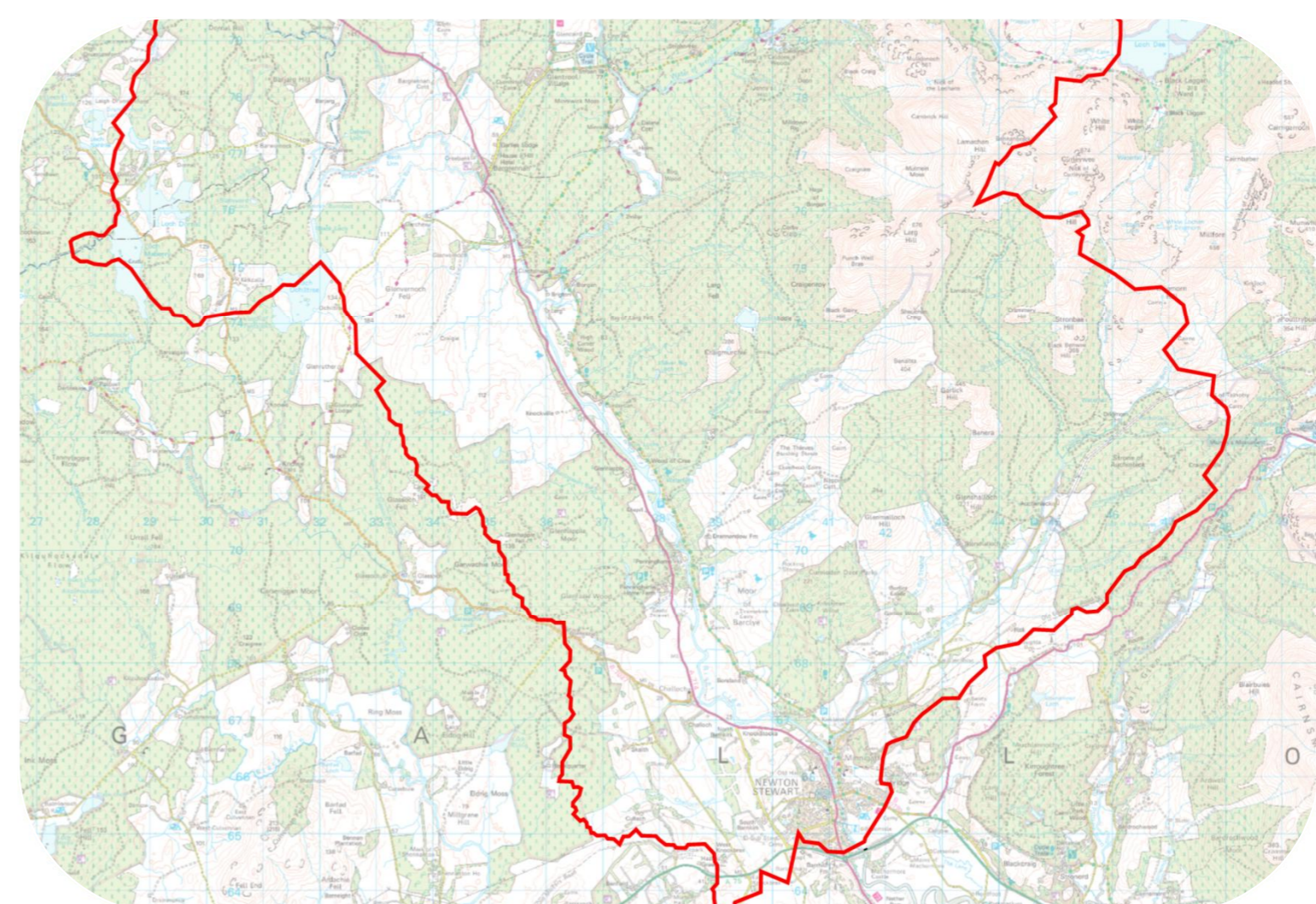
See Board 8 for locations



Options to Reprofile Land

- Option 19: Reprofile Land at Broomisle

See Board 8 for locations



Options Suggested by Cree Valley Community Council (CVCC)

- Option 20: Reinstate Flood Storage Area at Water of Minnoch
- Option 21: Upstream Storage at The Ghyll
- Option 22: Upstream Storage on River Cree Tributaries
- Option 23: Natural Flood Management as part of Forest Management
- Option 24: Reprofile Land Around Pumping Station

See Boards 7 & 8 for locations