

Chief Officers





Dawn Roberts
Chief Executive
(Head of Paid Service)

 **Enabling and Customer Services**


 **Economy and Infrastructure**

 **Education, Skills and Community Wellbeing**

 **Social Work Services**
(Children, Families, Justice and Adult Services)



Lorna Meahan
Executive Director
Enabling and Customer Services




Lisa Arnold
Executive Director
Economy and Infrastructure



Gillian Brydson
Executive Director
Education, Skills and Community Wellbeing



Stephen Morgan
Service Director
Social Work Services (CSWO)



Nicole Hamlet
Interim Chief Officer
Dumfries and Galloway Health and Social Care Partnership



Vlad Valiente
Assistant Director
Governance and Human Resources
(Monitoring Officer)



Karen Brownlie
Interim Assistant Director
Transport and Infrastructure



Jim Brown
Assistant Director
Schools (Chief Education Officer)



Charles Rocks
Head of Children, Families and Justice Services (Depute CSWO)



Paul Garrett
Chief Financial Officer
(Section 95 Officer)



Alan Mawson
Interim Head of
Facilities, Waste and Neighbourhood Services




John Thin
Head of Education Resources



Alex Clark
Assessor and Electoral Registration Officer (ERO)



Steve Rogers
Head of Economy and Environment



Harry Hay
Head of Thriving Communities

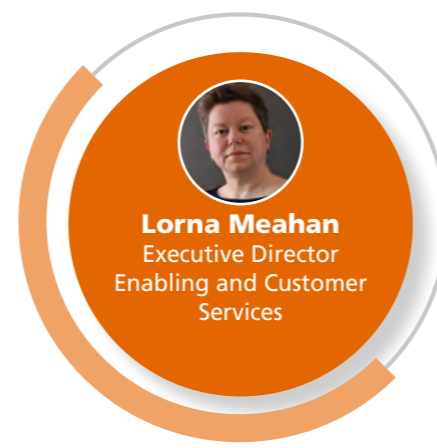


Mike Shepley
Head of Customer and Digital

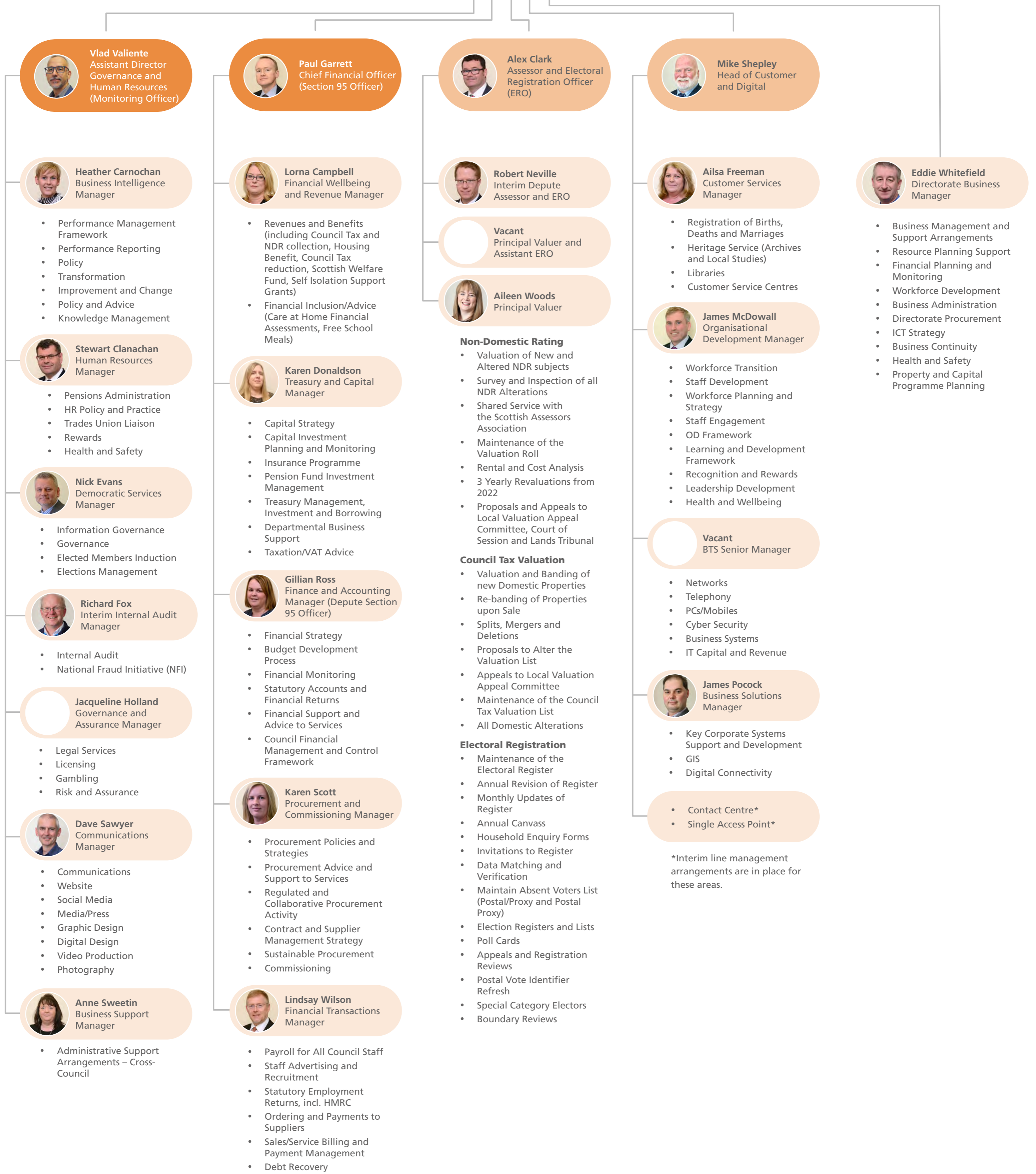
DGC Senior Leadership Structure

Last updated January 2025

Enabling and Customer Services



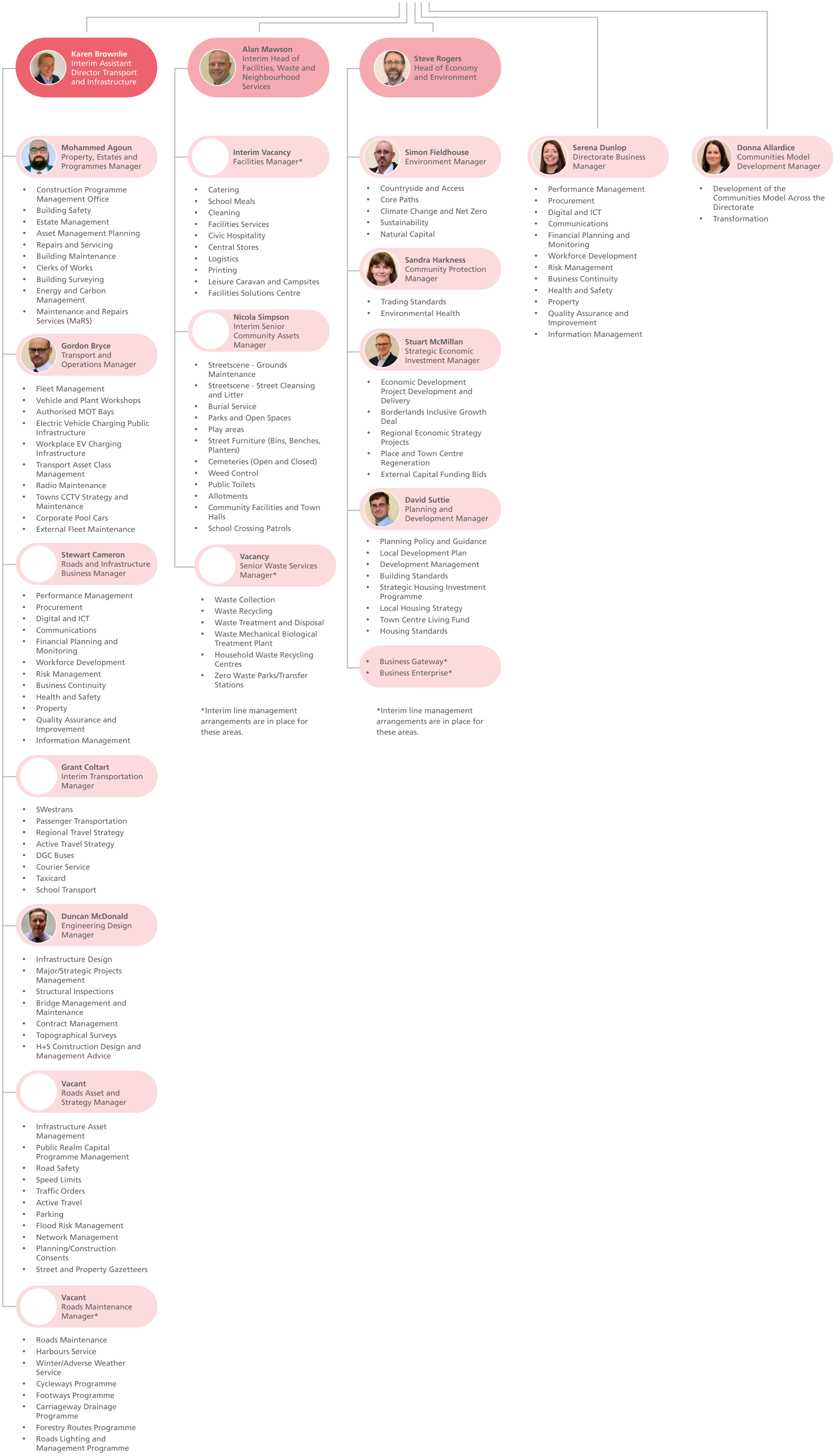
[Return to Chief Officers](#)



Economy and Infrastructure



[Return to Chief Officers](#)



Karen Brownlie
Interim Assistant
Director Transport
and Infrastructure

Mohammed Agoun
Property, Estates and
Programmes Manager

- Construction Programme Management Office
- Building Safety
- Estate Management
- Asset Management Planning
- Repairs and Servicing
- Building Maintenance
- Clerks of Works
- Building Surveying
- Energy and Carbon Management
- Maintenance and Repairs Services (MaRS)

Gordon Bryce
Transport and
Operations Manager

- Fleet Management
- Vehicle and Plant Workshops
- Authorised MOT Bays
- Electric Vehicle Charging Public Infrastructure
- Workplace EV Charging Infrastructure
- Transport Asset Class Management
- Radio Maintenance
- Towns CCTV Strategy and Maintenance
- Corporate Pool Cars
- External Fleet Maintenance

Stewart Cameron
Roads and Infrastructure
Business Manager

- Performance Management
- Procurement
- Digital and ICT
- Communications
- Financial Planning and Monitoring
- Workforce Development
- Risk Management
- Business Continuity
- Health and Safety
- Property
- Quality Assurance and Improvement
- Information Management

Grant Coltart
Interim Transportation
Manager

- SWestrans
- Passenger Transportation
- Regional Travel Strategy
- Active Travel Strategy
- DGC Buses
- Courier Service
- Taxicard
- School Transport

Duncan McDonald
Engineering Design
Manager

- Infrastructure Design
- Major/Strategic Projects Management
- Structural Inspections
- Bridge Management and Maintenance
- Contract Management
- Topographical Surveys
- H+S Construction Design and Management Advice

Vacant
Roads Asset and
Strategy Manager

- Infrastructure Asset Management
- Public Realm Capital Programme Management
- Road Safety
- Speed Limits
- Traffic Orders
- Active Travel
- Parking
- Flood Risk Management
- Network Management
- Planning/Construction Consents
- Street and Property Gazetteers

Vacant
Roads Maintenance
Manager*

- Roads Maintenance
- Harbours Service
- Winter/Adverse Weather Service
- Cycleways Programme
- Footways Programme
- Carriageway Drainage Programme
- Forestry Routes Programme
- Roads Lighting and Management Programme

*Interim line management arrangements are in place for these areas.

Alan Mawson
Interim Head of
Facilities, Waste and
Neighbourhood
Services

Interim Vacancy
Facilities Manager*

- Catering
- School Meals
- Cleaning
- Facilities Services
- Civic Hospitality
- Central Stores
- Logistics
- Printing
- Leisure Caravan and Campsites
- Facilities Solutions Centre

Nicola Simpson
Interim Senior
Community Assets
Manager

- Streetscene - Grounds Maintenance
- Streetscene - Street Cleansing and Litter
- Burial Service
- Parks and Open Spaces
- Play areas
- Street Furniture (Bins, Benches, Planters)
- Cemeteries (Open and Closed)
- Weed Control
- Public Toilets
- Allotments
- Community Facilities and Town Halls
- School Crossing Patrols

Vacancy
Senior Waste Services
Manager*

- Waste Collection
- Waste Recycling
- Waste Treatment and Disposal
- Waste Mechanical Biological Treatment Plant
- Household Waste Recycling Centres
- Zero Waste Parks/Transfer Stations

*Interim line management arrangements are in place for these areas.

Steve Rogers
Head of Economy
and Environment

Simon Fieldhouse
Environment Manager

- Countryside and Access
- Core Paths
- Climate Change and Net Zero
- Sustainability
- Natural Capital

Sandra Harkness
Community Protection
Manager

- Trading Standards
- Environmental Health

Stuart McMillan
Strategic Economic
Investment Manager

- Economic Development Project Development and Delivery
- Borderlands Inclusive Growth Deal
- Regional Economic Strategy Projects
- Place and Town Centre Regeneration
- External Capital Funding Bids

David Suttie
Planning and
Development Manager

- Planning Policy and Guidance
- Local Development Plan
- Development Management
- Building Standards
- Strategic Housing Investment Programme
- Local Housing Strategy
- Town Centre Living Fund
- Housing Standards

Business Gateway*
Business Enterprise*

*Interim line management arrangements are in place for these areas.

Serena Dunlop
Directorate Business
Manager

- Performance Management
- Procurement
- Digital and ICT
- Communications
- Financial Planning and Monitoring
- Workforce Development
- Risk Management
- Business Continuity
- Health and Safety
- Property
- Quality Assurance and Improvement
- Information Management

Donna Allardice
Communities Model
Development Manager

- Development of the Communities Model Across the Directorate
- Transformation

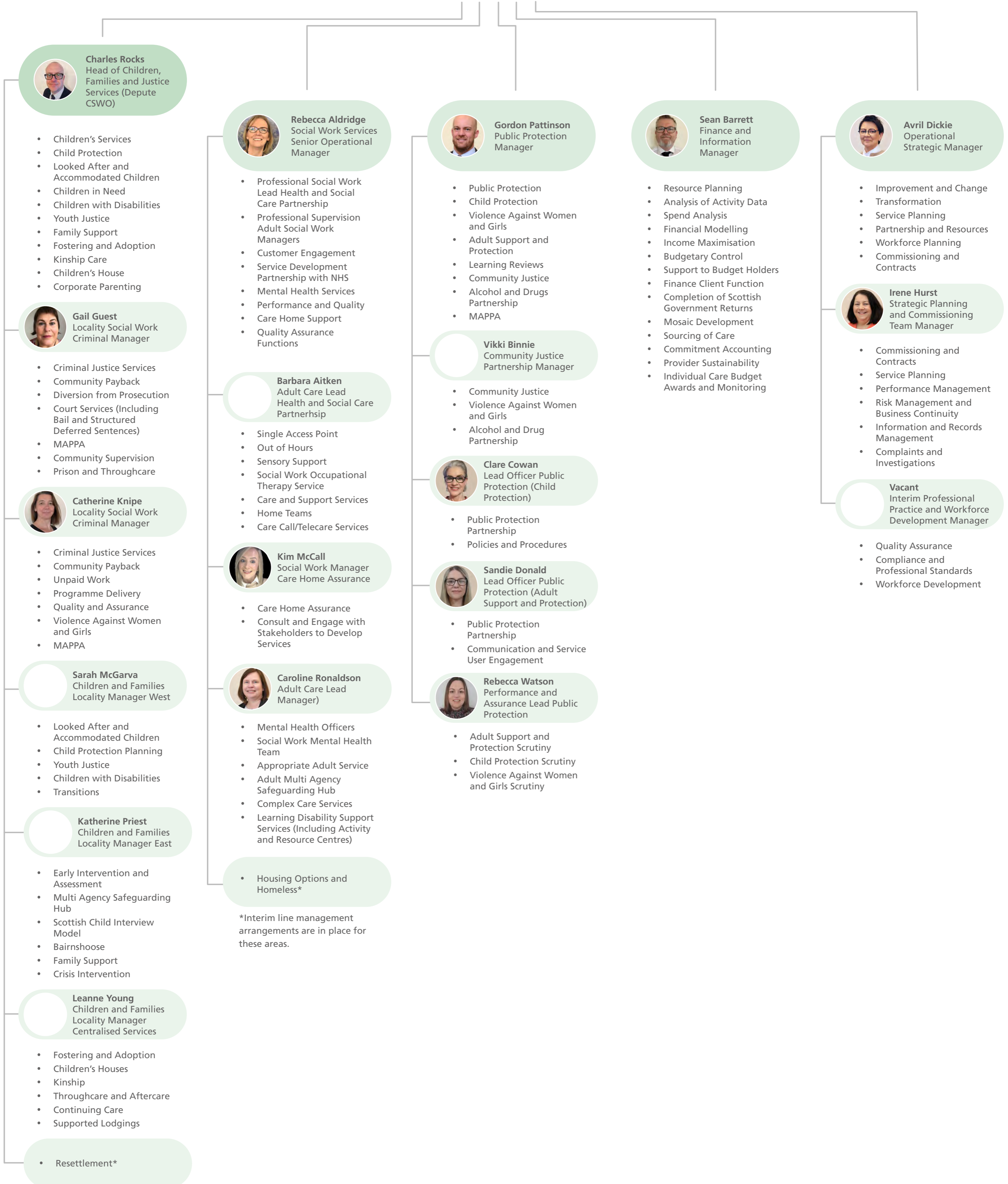
Education, Skills and Community Wellbeing



Social Work Services



[Return to Chief Officers](#)



*Interim line management arrangements are in place for these areas.