



DUMFRIES AND
GALLOWAY COUNCIL

Local Development Plan

Supplementary Guidance

Adopted 22nd January 2016



Mineral Resources

Dumfries and Galloway Council

Mineral Resources Supplementary Guidance

1 Introduction

1.1 The purpose of this Supplementary Guidance is to provide further information on locations of mineral and coal resources in order to help implement Local Development Plan (LDP) Policy ED14: Minerals Safeguarding.

1.2 The minerals industry provides raw materials for construction, manufacturing, agriculture and other sectors. Minerals make an important contribution to the economy, providing materials for construction, energy supply and other uses, and supporting employment. Scottish Planning Policy (SPP) states that the planning system should safeguard workable resources and ensure that an adequate and steady supply is available. National Planning Framework (NPF) 3 also notes that minerals will be required as construction materials and to add to a diverse energy mix.

1.3 A mineral resource is a concentration or occurrence of material of intrinsic economic interest in or on the earth's crust in such form, quality and quantity that there are reasonable prospects for eventual economic extraction. Dumfries and Galloway possesses a variety of important mineral resources which can mainly be categorised as either aggregate¹ or non-aggregate construction minerals. Sand and Gravel, Sandstone and Crushed rock are collectively known as aggregate minerals used in the construction and repair of roads and buildings. They are worked by surface extraction. Non-aggregate minerals such as Dimension Sandstone, Granite and Greywacke (a form of sandstone) are worked in a similar fashion, but are of specific use, such as in the construction of natural stone buildings and in the repair and maintenance of historic buildings and structures. Additionally, energy minerals play an important role in the national economy. In Dumfries and Galloway, coal is worked in upper Nithsdale and there are also coal resources in lower Canonbie.

1.4 Minerals are valuable finite resources that can only be worked where they are found. It is therefore important that their sterilisation by other development is avoided where possible, and that continuity of supply is ensured. This Supplementary Guidance (SG) identifies: mineral sites that are underlain by the mineral reserves associated with the quarries listed in the Minerals Assessment Technical Paper (January 2013); maps of areas where planning permission for coal working has been granted; and also identifies the wider area where the region's coal resource can be found as a statement of fact.

1.5 Further details on the mineral resource in Dumfries and Galloway and the identification of reserves can be found in the Minerals Assessment Technical Paper at: www.dumgal.gov.uk/LDP. The Technical Paper identifies that there is currently

¹ Aggregates are normally defined as being hard granular, materials which are suitable for use either on their own or with the addition of lime, cement or bituminous binder [British Geological Society].

an adequate landbank of mineral reserves and therefore no areas of search are proposed.

2 Local Development Plan Policy Context

2.1 The Local Development Plan sets out, through both its Vision and policies, the fundamental principle of Sustainable Development. One of the purposes of the LDP, therefore, is to encourage “a thriving region with a sustainable economy built on sustainable principles that both safeguard the landscape, natural and cultural environment and promote growth”. A key aspect of sustainable development is the conservation and safeguarding of non-renewable resources such as minerals for current and future generations.

2.2 LDP Policy ED14 recognises that, with an increased pressure for land for all development, there is a need to ensure that local mineral resources are not sterilised by other development which could result in insufficient supplies for future generations.

Policy ED14: Mineral Safeguarding

Permanent development that would result in the sterilisation of mineral resources that are viable at present or that may become viable in future and which either could be extracted in accordance with LDP policy or which are the subject of extraction interest will not be permitted.

This policy will be supported by supplementary guidance. The guidance will include maps showing sites that are underlain by the mineral reserves associated with the various quarries identified in the Mineral Assessment Technical Paper (January 2013), any land where planning permission for coal working has been granted and any other land where a mineral resource should be safeguarded. The guidance will also identify broad areas where surface coal extraction may be acceptable.

3 Mineral Resource / Coal Maps

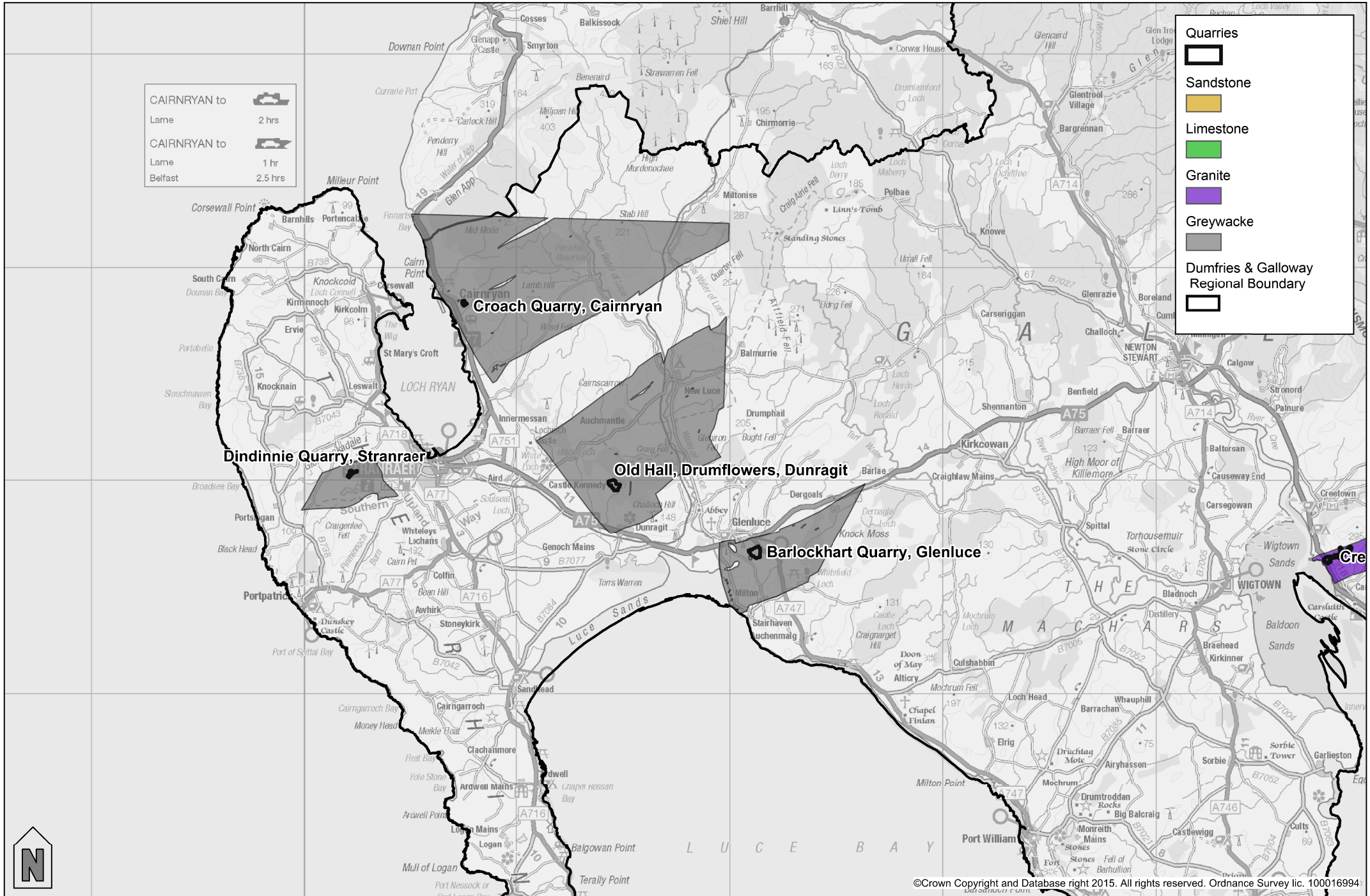
3.1 The following maps show sites that are underlain by the mineral reserves associated with the various quarries identified in the Mineral Assessment Technical Paper (January 2013) and any land where planning permission for coal working has been granted, as well as the underlying coal resource. Coal can be found in Upper Nithsdale (around Sanquhar and Kirkconnel / Kelloholm) and around Canonbie in the east of the region.

3.2 The quarry maps show both bedrock geology (maps 1-5), which includes minerals such as granite and greywacke and superficial geology (maps 6-7), which includes those minerals obtained by surface extraction such as sand and gravel. Please note that these maps have used British Geology Society (BGS) data which divides the geological layers and each mineral type into separate smaller polygons / areas of varying sizes – so an entire area of granite, for example, may be divided into many smaller zones. Therefore, please note that the extent of the mineral shown around each quarry does not necessarily indicate how far that particular mineral type extends. These maps only show the particular polygon (mapped by the

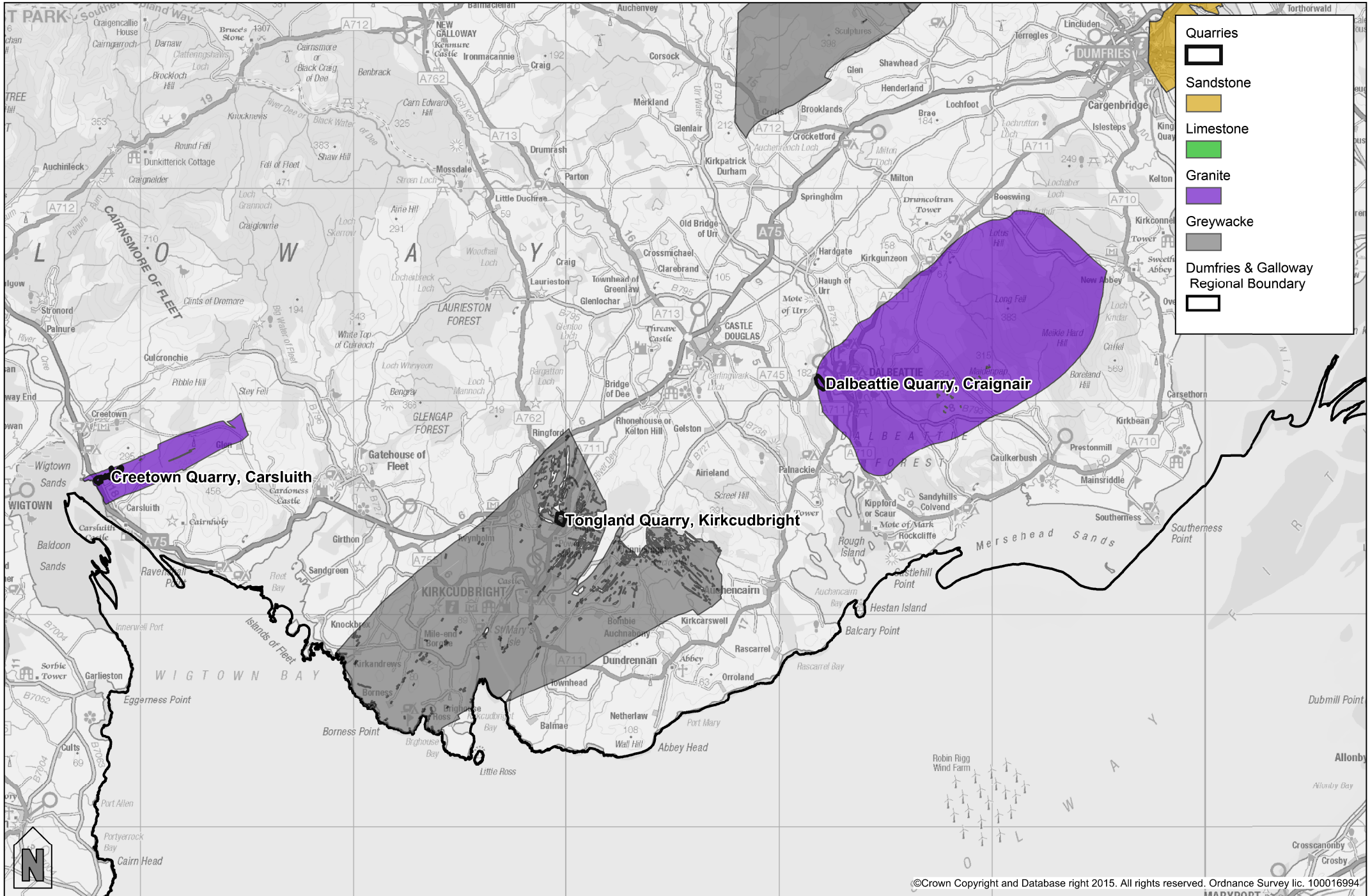
BGS) that is associated with the identified quarry. The coal maps (maps 8-9) show those areas which have been subject to planning permission as identified on the Council's Geographical Information System (GIS). These maps only show the particular polygon (mapped by the BGS) that is associated with the identified quarry.

3.3 The coal maps (maps 8-9) show those areas where coal resources are known to be found and those areas which have been subject to planning permission as identified on the Council's Geographic Information System (GIS). Although Local Development Plan Policy ED14: Mineral Safeguarding seeks supplementary guidance to identify broad areas where surface coal extraction may be acceptable, it is intended that identification of areas of search be discussed and identified through the next Main Issues Report and Proposed Plan as part of the process of preparing the next local development plan. That will allow the opportunity for further engagement with communities and the coal industry on the topic. In the meantime, proposals for coal extraction will be assessed under local development plan policies ED14: Mineral Safeguarding and ED15: Minerals. Applicants and communities should note that Scottish Planning Policy paragraphs 234 to 248 are relevant to such proposals.

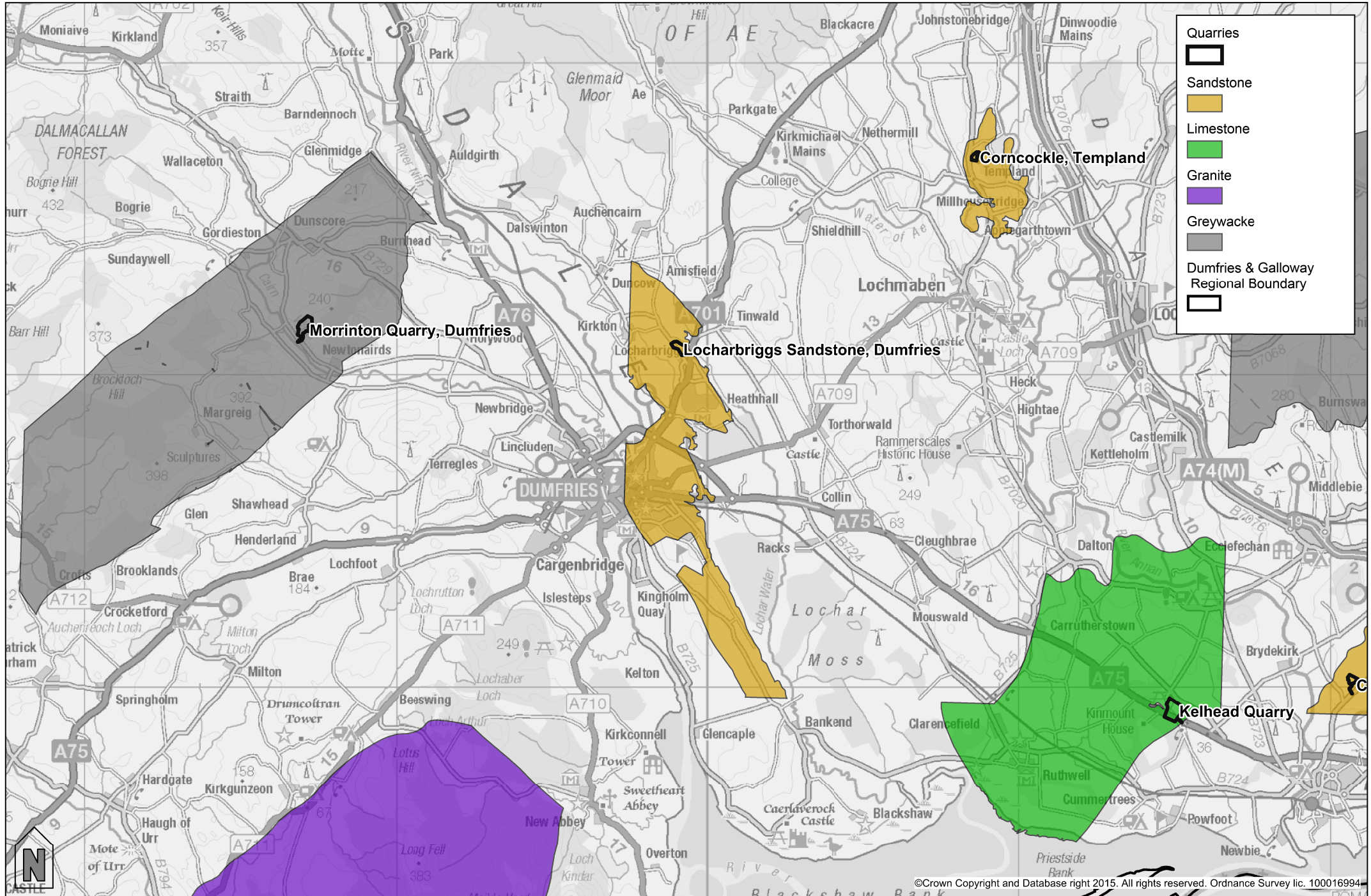
Quarry Locations and Underlying Minerals: Map 1



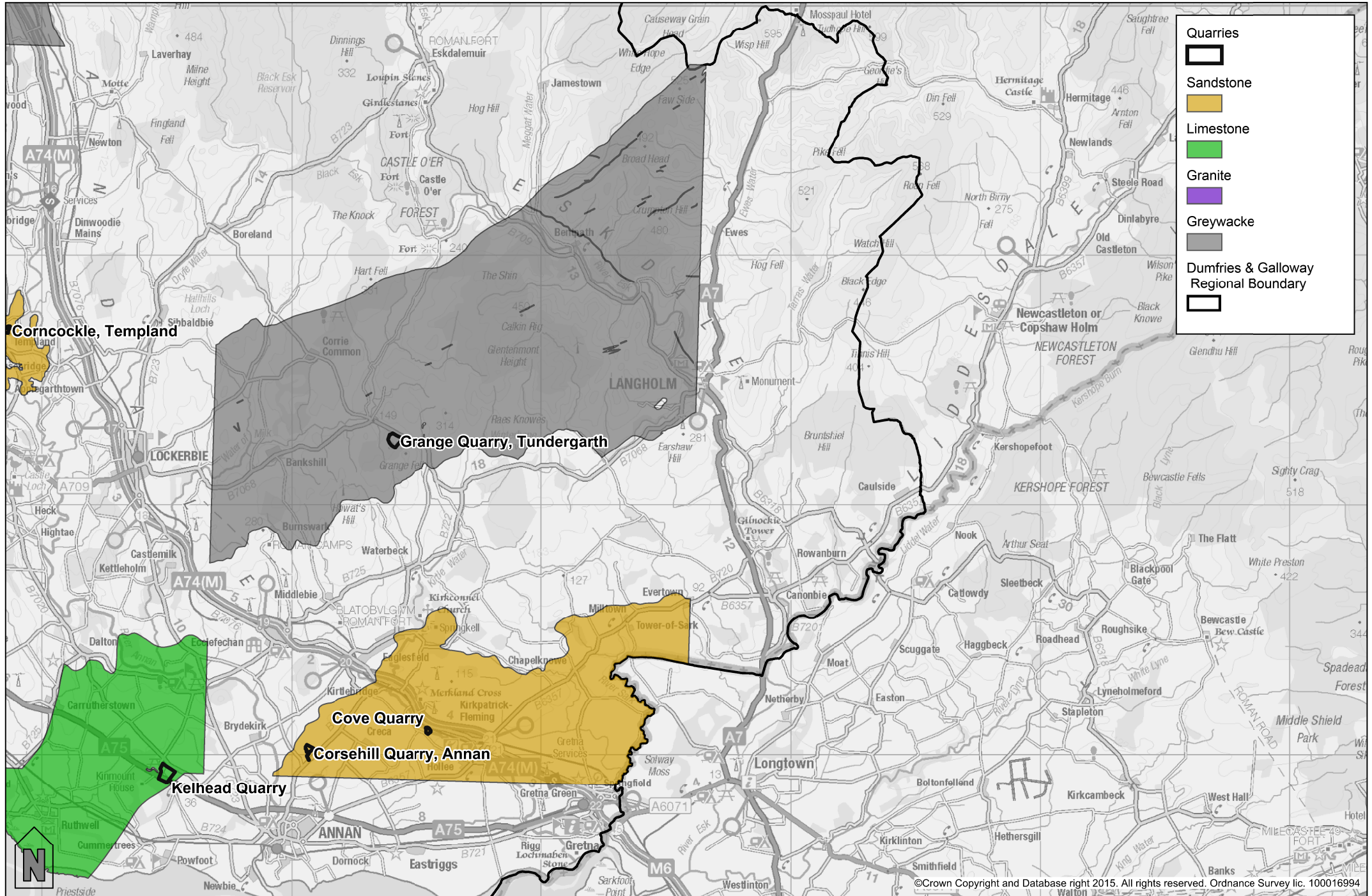
Quarry Locations and Underlying Minerals: Map 2



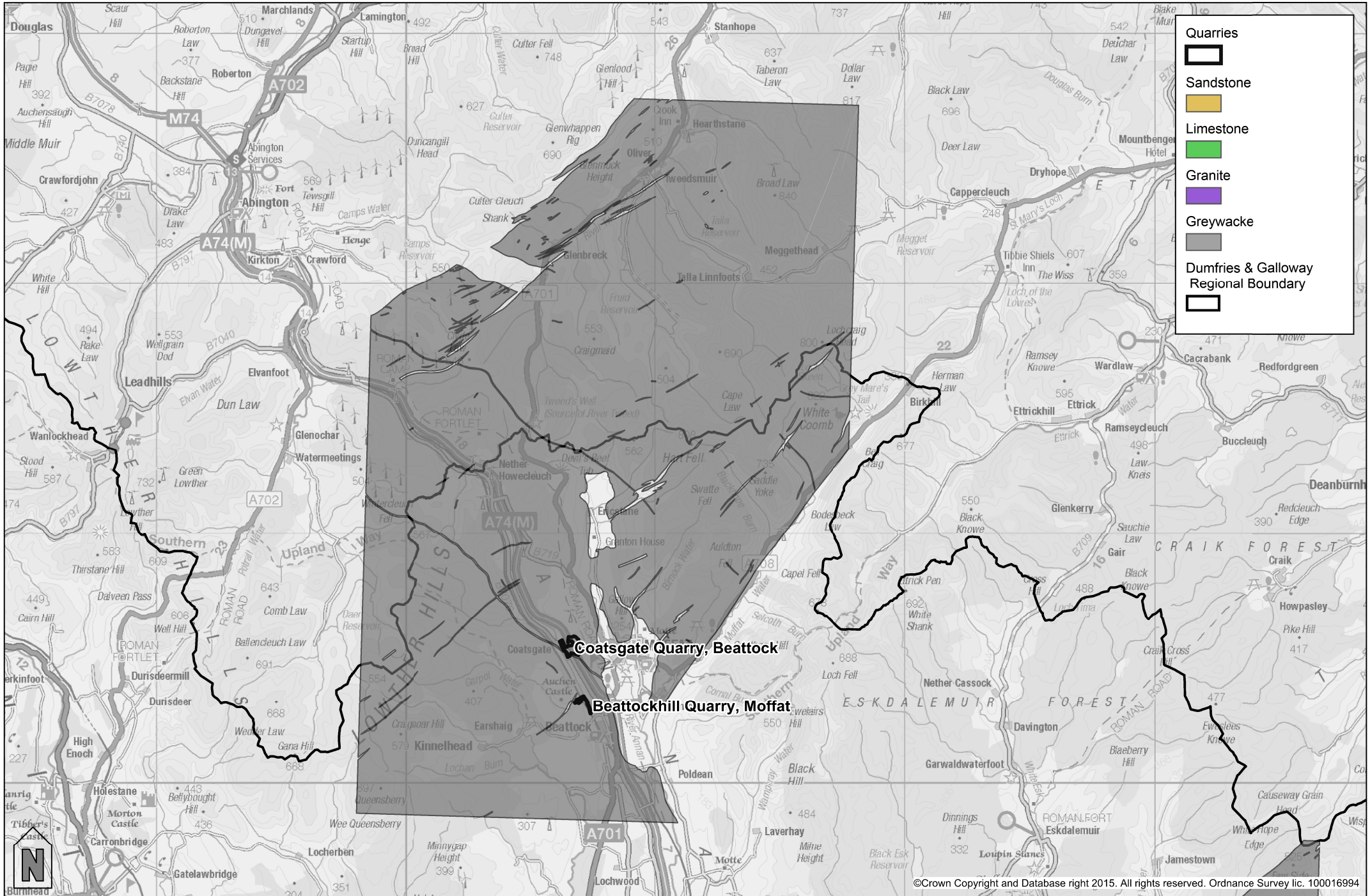
Quarry Locations and Underlying Minerals: Map 3



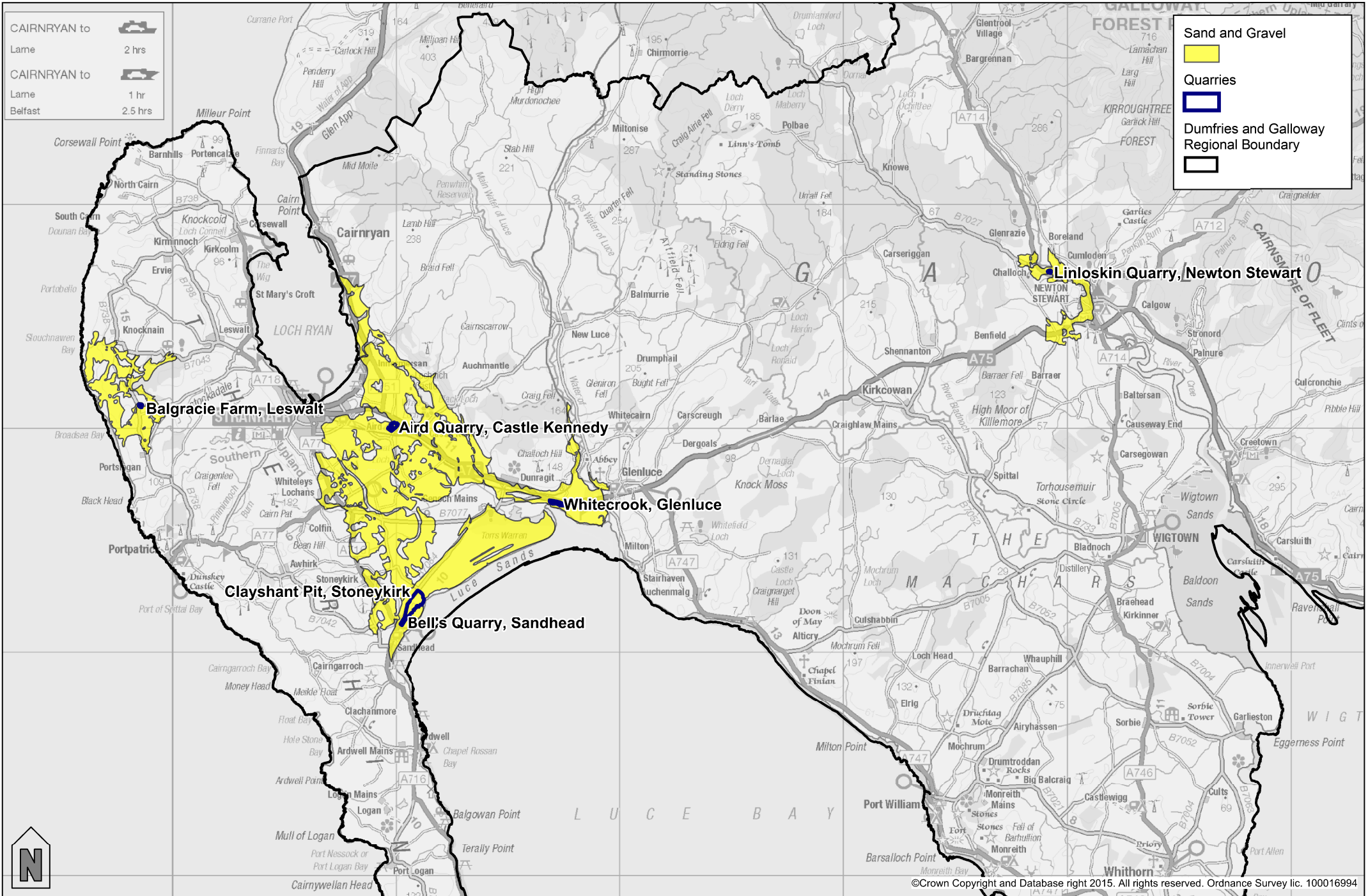
Quarry Locations and Underlying Minerals: Map 4



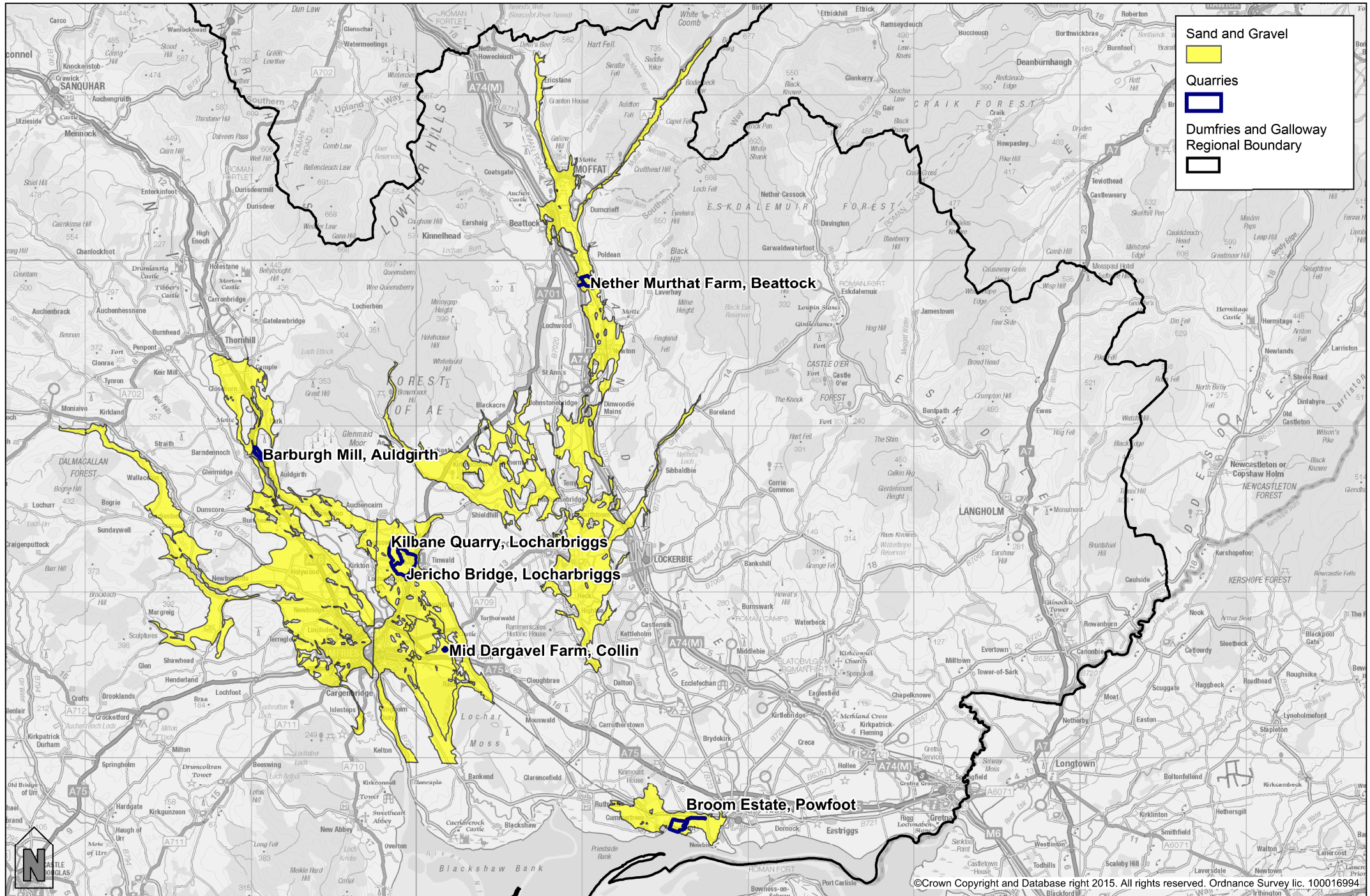
Quarry Locations and Underlying Minerals: Map 5



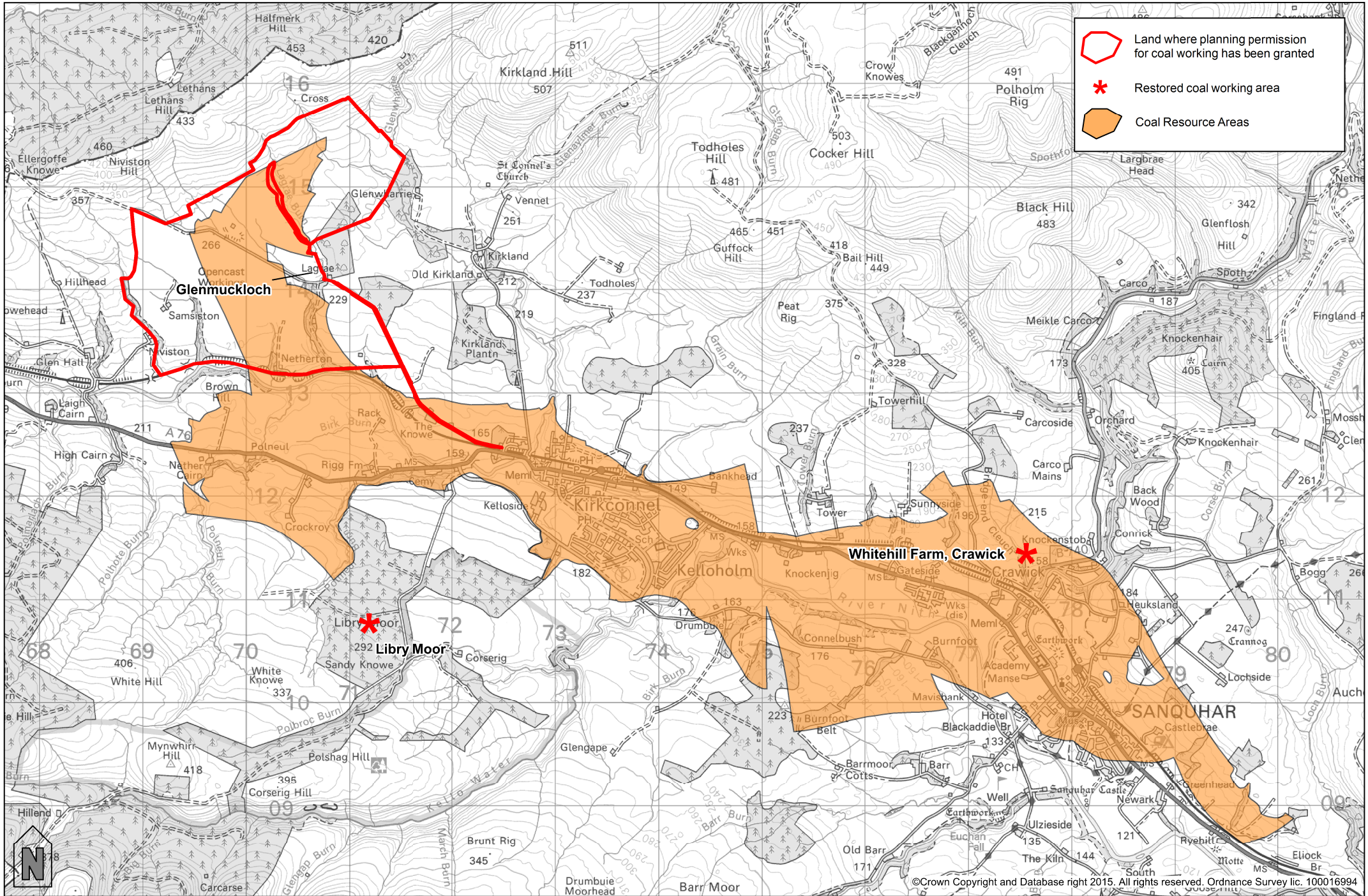
Quarry Locations and Underlying Minerals: Map 6



Quarry Locations and Underlying Minerals: Map 7



Coal Resource Areas: Upper Nithsdale



Coal Resource Areas: Canonbie

