

# Chief Officers




**Dawn Roberts**  
Chief Executive  
(Head of Paid Service)

 **Enabling and Customer Services**

 **Economy and Infrastructure**

 **Education, Skills and Community Wellbeing**

 **Social Work Services**  
(Children, Families, Justice and Adult Services)



**Lorna Meahan**  
Executive Director  
Enabling and Customer Services




**Derek Crichton**  
\*Director Communities



**Gillian Brydson**  
Executive Director  
Education, Skills and Community Wellbeing



**Stephen Morgan**  
Service Director  
Social Work Services (CSWO)



**Nicole Hamlet**  
Interim Chief Officer  
Dumfries and Galloway Health and Social Care Partnership



**Vlad Valiente**  
Assistant Director  
Governance and Human Resources  
(Monitoring Officer)



**Stephen Hall**  
\*\*Interim Assistant  
Director Transport and Infrastructure



**Jim Brown**  
Assistant Director  
Schools (Chief Education Officer)



**Paul Garrett**  
Chief Financial Officer  
(Section 95 Officer)



**Karen Brownlie**  
Head of Facilities, Waste and Neighbourhood Services



**John Thin**  
Head of Education Resources



**Charles Rocks**  
Head of Children, Families and Justice Services (Depute CSWO)



**Alex Clark**  
Interim Assessor and Electoral Registration Officer (ERO)



**Steve Rogers**  
Head of Economy and Environment



**Harry Hay**  
Head of Thriving Communities



**Mike Shepley**  
Head of Customer and Digital

\*Derek Crichton, Director Communities, will fulfil the duties and responsibilities of the Executive Director Economy and Infrastructure until his retirement on 12 July 2024. Lisa Arnold has been appointed as Executive Director Economy and Infrastructure and takes up post on 5 August 2024.

\*\*Natalie McKail has been appointed as Assistant Director Transport and Infrastructure and takes up post on 15 July 2024.

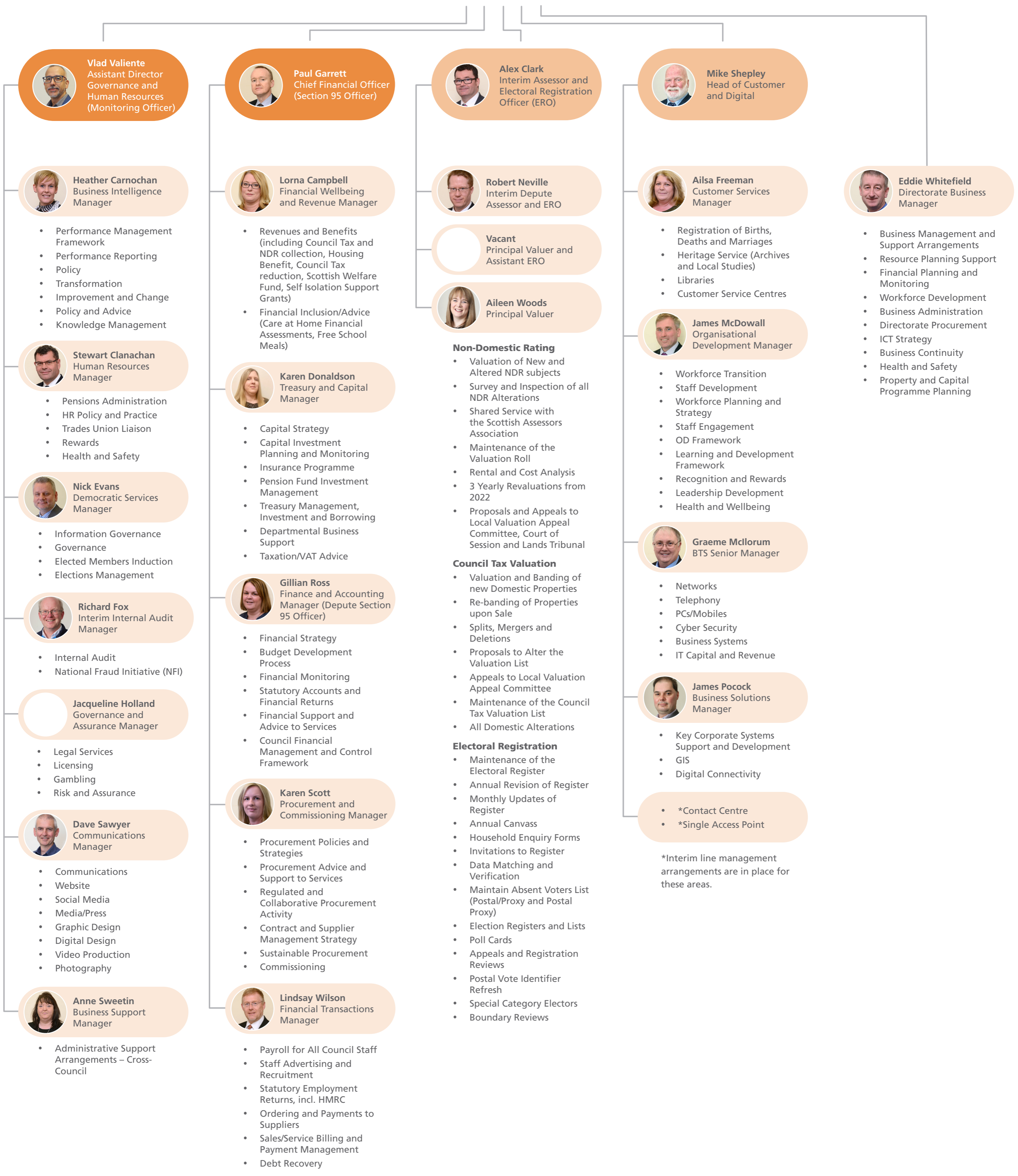
**DGC Senior Leadership Structure**  
Post-1 April 2024

# Enabling and Customer Services



**Lorna Meahan**  
Executive Director  
Enabling and Customer Services

 [Return to Chief Officers](#)



- \*Contact Centre
- \*Single Access Point

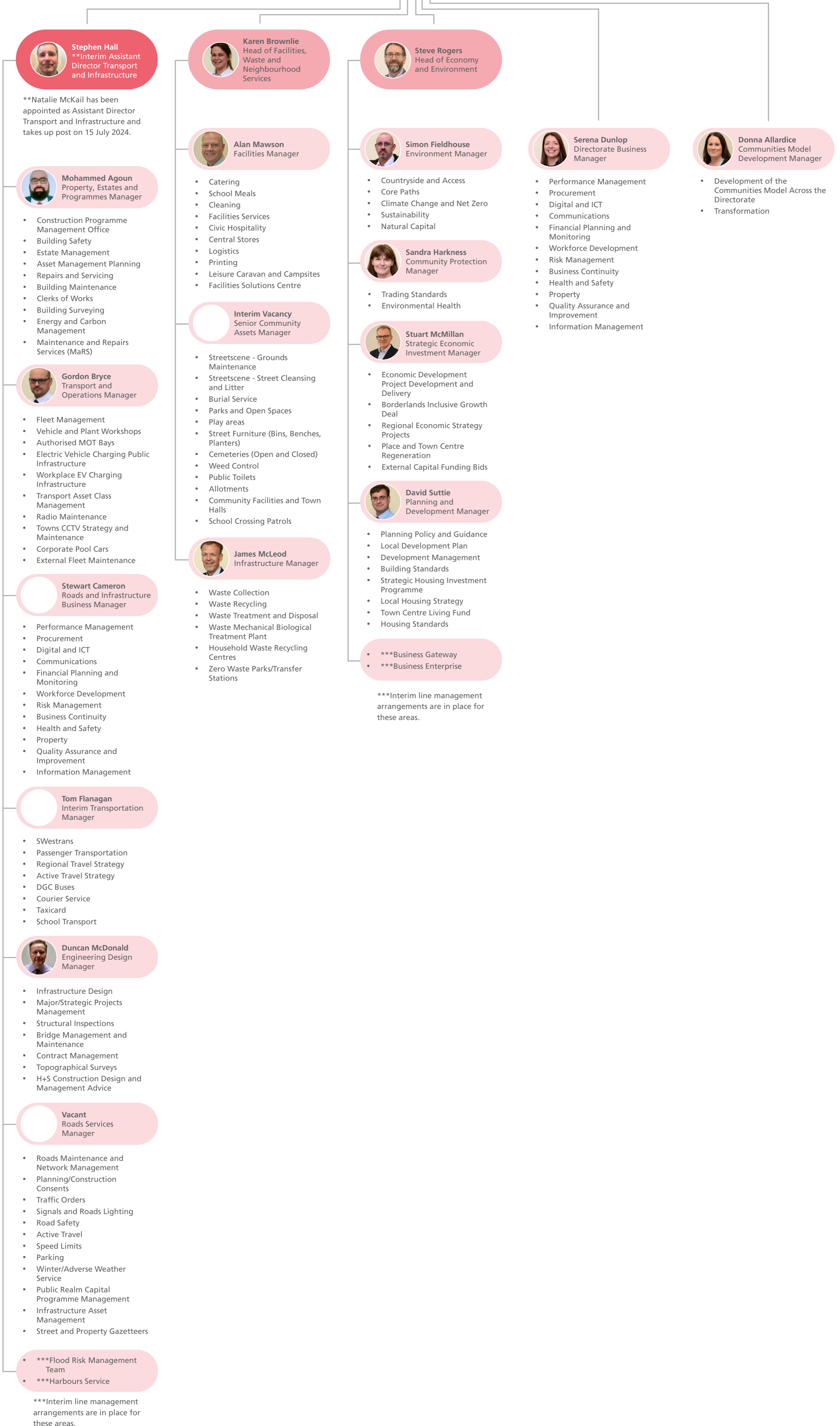
\*Interim line management arrangements are in place for these areas.

# Economy and Infrastructure

\*Derek Crichton, Director Communities, will fulfil the duties and responsibilities of the Executive Director Economy and Infrastructure until his retirement on 12 July 2024. Lisa Arnold has been appointed as Executive Director Economy and Infrastructure and takes up post on 5 August 2024.



[Return to Chief Officers](#)



**Stephen Hall**  
\*\*Interim Assistant Director Transport and Infrastructure

\*\*Natalie McKail has been appointed as Assistant Director Transport and Infrastructure and takes up post on 15 July 2024.

**Mohammed Agoun**  
Property, Estates and Programmes Manager

- Construction Programme Management Office
- Building Safety
- Estate Management
- Asset Management Planning
- Repairs and Servicing
- Building Maintenance
- Clerks of Works
- Building Surveying
- Energy and Carbon Management
- Maintenance and Repairs Services (MaRS)

**Gordon Bryce**  
Transport and Operations Manager

- Fleet Management
- Vehicle and Plant Workshops
- Authorised MOT Bays
- Electric Vehicle Charging Public Infrastructure
- Workplace EV Charging Infrastructure
- Transport Asset Class Management
- Radio Maintenance
- Towns CCTV Strategy and Maintenance
- Corporate Pool Cars
- External Fleet Maintenance

**Stewart Cameron**  
Roads and Infrastructure Business Manager

- Performance Management
- Procurement
- Digital and ICT
- Communications
- Financial Planning and Monitoring
- Workforce Development
- Risk Management
- Business Continuity
- Health and Safety
- Property
- Quality Assurance and Improvement
- Information Management

**Tom Flanagan**  
Interim Transportation Manager

- SWestrans
- Passenger Transportation
- Regional Travel Strategy
- Active Travel Strategy
- DGC Buses
- Courier Service
- Taxicard
- School Transport

**Duncan McDonald**  
Engineering Design Manager

- Infrastructure Design
- Major/Strategic Projects Management
- Structural Inspections
- Bridge Management and Maintenance
- Contract Management
- Topographical Surveys
- H+S Construction Design and Management Advice

**Vacant**  
Roads Services Manager

- Roads Maintenance and Network Management
- Planning/Construction Consents
- Traffic Orders
- Signals and Roads Lighting
- Road Safety
- Active Travel
- Speed Limits
- Parking
- Winter/Adverse Weather Service
- Public Realm Capital Programme Management
- Infrastructure Asset Management
- Street and Property Gazetteers

\*\*\*Flood Risk Management Team  
\*\*\*Harbours Service

\*\*\*Interim line management arrangements are in place for these areas.

**Karen Brownlie**  
Head of Facilities, Waste and Neighbourhood Services

**Alan Mawson**  
Facilities Manager

- Catering
- School Meals
- Cleaning
- Facilities Services
- Civic Hospitality
- Central Stores
- Logistics
- Printing
- Leisure Caravan and Campsites
- Facilities Solutions Centre

**Interim Vacancy**  
Senior Community Assets Manager

- Streetscene - Grounds Maintenance
- Streetscene - Street Cleansing and Litter
- Burial Service
- Parks and Open Spaces
- Play areas
- Street Furniture (Bins, Benches, Planters)
- Cemeteries (Open and Closed)
- Weed Control
- Public Toilets
- Allotments
- Community Facilities and Town Halls
- School Crossing Patrols

**James McLeod**  
Infrastructure Manager

- Waste Collection
- Waste Recycling
- Waste Treatment and Disposal
- Waste Mechanical Biological Treatment Plant
- Household Waste Recycling Centres
- Zero Waste Parks/Transfer Stations

**Steve Rogers**  
Head of Economy and Environment

**Simon Fieldhouse**  
Environment Manager

- Countryside and Access
- Core Paths
- Climate Change and Net Zero
- Sustainability
- Natural Capital

**Sandra Harkness**  
Community Protection Manager

- Trading Standards
- Environmental Health

**Stuart McMillan**  
Strategic Economic Investment Manager

- Economic Development Project Development and Delivery
- Borderlands Inclusive Growth Deal
- Regional Economic Strategy Projects
- Place and Town Centre Regeneration
- External Capital Funding Bids

**David Suttie**  
Planning and Development Manager

- Planning Policy and Guidance
- Local Development Plan
- Development Management
- Building Standards
- Strategic Housing Investment Programme
- Local Housing Strategy
- Town Centre Living Fund
- Housing Standards

\*\*\*Business Gateway  
\*\*\*Business Enterprise

\*\*\*Interim line management arrangements are in place for these areas.

**Serena Dunlop**  
Directorate Business Manager

- Performance Management
- Procurement
- Digital and ICT
- Communications
- Financial Planning and Monitoring
- Workforce Development
- Risk Management
- Business Continuity
- Health and Safety
- Property
- Quality Assurance and Improvement
- Information Management

**Donna Allardice**  
Communities Model Development Manager

- Development of the Communities Model Across the Directorate
- Transformation

# Education, Skills and Community Wellbeing

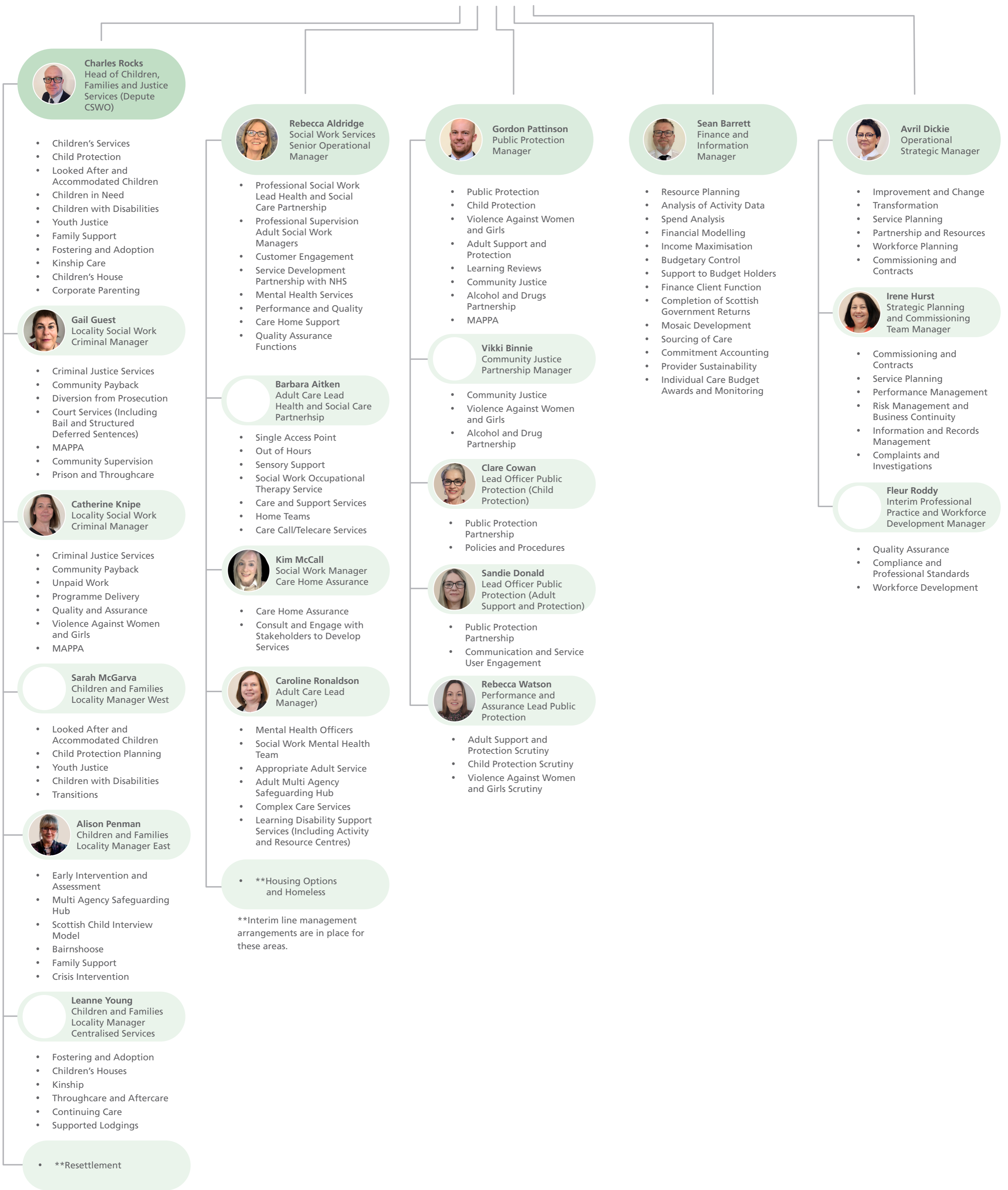


# Social Work Services



**Stephen Morgan**  
Service Director  
Social Work Services  
(CSWO)

 [Return to Chief Officers](#)




**Charles Rocks**  
Head of Children, Families and Justice Services (Depute CSWO)

- Children's Services
- Child Protection
- Looked After and Accommodated Children
- Children in Need
- Children with Disabilities
- Youth Justice
- Family Support
- Fostering and Adoption
- Kinship Care
- Children's House
- Corporate Parenting




**Gail Guest**  
Locality Social Work Criminal Manager

- Criminal Justice Services
- Community Payback
- Diversion from Prosecution
- Court Services (Including Bail and Structured Deferred Sentences)
- MAPPA
- Community Supervision
- Prison and Throughcare



**Catherine Knipe**  
Locality Social Work Criminal Manager

- Criminal Justice Services
- Community Payback
- Unpaid Work
- Programme Delivery
- Quality and Assurance
- Violence Against Women and Girls
- MAPPA




**Sarah McGarva**  
Children and Families Locality Manager West

- Looked After and Accommodated Children
- Child Protection Planning
- Youth Justice
- Children with Disabilities
- Transitions



**Alison Penman**  
Children and Families Locality Manager East

- Early Intervention and Assessment
- Multi Agency Safeguarding Hub
- Scottish Child Interview Model
- Bairnshoose
- Family Support
- Crisis Intervention




**Leanne Young**  
Children and Families Locality Manager Centralised Services

- Fostering and Adoption
- Children's Houses
- Kinship
- Throughcare and Aftercare
- Continuing Care
- Supported Lodgings


- \*\*Resettlement

\*\*Interim line management arrangements are in place for these areas.



**Rebecca Aldridge**  
Social Work Services Senior Operational Manager

- Professional Social Work Lead Health and Social Care Partnership
- Professional Supervision Adult Social Work Managers
- Customer Engagement
- Service Development Partnership with NHS
- Mental Health Services
- Performance and Quality
- Care Home Support
- Quality Assurance Functions



**Barbara Aitken**  
Adult Care Lead Health and Social Care Partnership

- Single Access Point
- Out of Hours
- Sensory Support
- Social Work Occupational Therapy Service
- Care and Support Services
- Home Teams
- Care Call/Telecare Services




**Kim McCall**  
Social Work Manager Care Home Assurance

- Care Home Assurance
- Consult and Engage with Stakeholders to Develop Services



**Caroline Ronaldson**  
Adult Care Lead Manager

- Mental Health Officers
- Social Work Mental Health Team
- Appropriate Adult Service
- Adult Multi Agency Safeguarding Hub
- Complex Care Services
- Learning Disability Support Services (Including Activity and Resource Centres)




**\*\*Housing Options and Homeless**

\*\*Interim line management arrangements are in place for these areas.




**Gordon Pattinson**  
Public Protection Manager

- Public Protection
- Child Protection
- Violence Against Women and Girls
- Adult Support and Protection
- Learning Reviews
- Community Justice
- Alcohol and Drugs Partnership
- MAPPA




**Vikki Binnie**  
Community Justice Partnership Manager

- Community Justice
- Violence Against Women and Girls
- Alcohol and Drug Partnership




**Clare Cowan**  
Lead Officer Public Protection (Child Protection)

- Public Protection Partnership
- Policies and Procedures




**Sandie Donald**  
Lead Officer Public Protection (Adult Support and Protection)

- Public Protection Partnership
- Communication and Service User Engagement



**Rebecca Watson**  
Performance and Assurance Lead Public Protection

- Adult Support and Protection Scrutiny
- Child Protection Scrutiny
- Violence Against Women and Girls Scrutiny




**Sean Barrett**  
Finance and Information Manager

- Resource Planning
- Analysis of Activity Data
- Spend Analysis
- Financial Modelling
- Income Maximisation
- Budgetary Control
- Support to Budget Holders
- Finance Client Function
- Completion of Scottish Government Returns
- Mosaic Development
- Sourcing of Care
- Commitment Accounting
- Provider Sustainability
- Individual Care Budget Awards and Monitoring




**Avril Dickie**  
Operational Strategic Manager

- Improvement and Change
- Transformation
- Service Planning
- Partnership and Resources
- Workforce Planning
- Commissioning and Contracts



**Irene Hurst**  
Strategic Planning and Commissioning Team Manager

- Commissioning and Contracts
- Service Planning
- Performance Management
- Risk Management and Business Continuity
- Information and Records Management
- Complaints and Investigations



**Fleur Roddy**  
Interim Professional Practice and Workforce Development Manager

- Quality Assurance
- Compliance and Professional Standards
- Workforce Development