

# Chief Officers




**Dawn Roberts**  
Chief Executive  
(Head of Paid Service)

 **Enabling and Customer Services**


 **Economy and Infrastructure**

 **Education, Skills and Community Wellbeing**

 **Social Work Services**  
(Children, Families, Justice and Adult Services)



**Lorna Meahan**  
Executive Director  
Enabling and Customer Services




**Lisa Arnold**  
Executive Director  
Economy and Infrastructure



**Gillian Brydson**  
Executive Director  
Education, Skills and Community Wellbeing




**Stephen Morgan**  
Service Director  
Social Work Services (CSWO)



**Nicole Hamlet**  
Interim Chief Officer  
Dumfries and Galloway Health and Social Care Partnership



**Vlad Valiente**  
Assistant Director  
Governance and Human Resources  
(Monitoring Officer)




**Karen Brownlie**  
Interim Assistant Director  
Transport and Infrastructure



**Jim Brown**  
Assistant Director  
Schools (Chief Education Officer)



**Charles Rocks**  
Head of Children, Families and Justice Services (Depute CSWO)



**Paul Garrett**  
Chief Financial Officer  
(Section 95 Officer)



**Alan Mawson**  
Interim Head of  
Facilities, Waste and Neighbourhood Services




**John Thin**  
Head of Education Resources



**Alex Clark**  
Assessor and Electoral Registration Officer (ERO)



**Steve Rogers**  
Head of Economy and Environment



**Harry Hay**  
Head of Thriving Communities

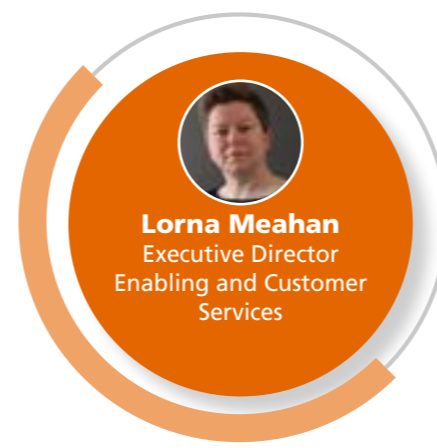


**Mike Shepley**  
Head of Customer and Digital

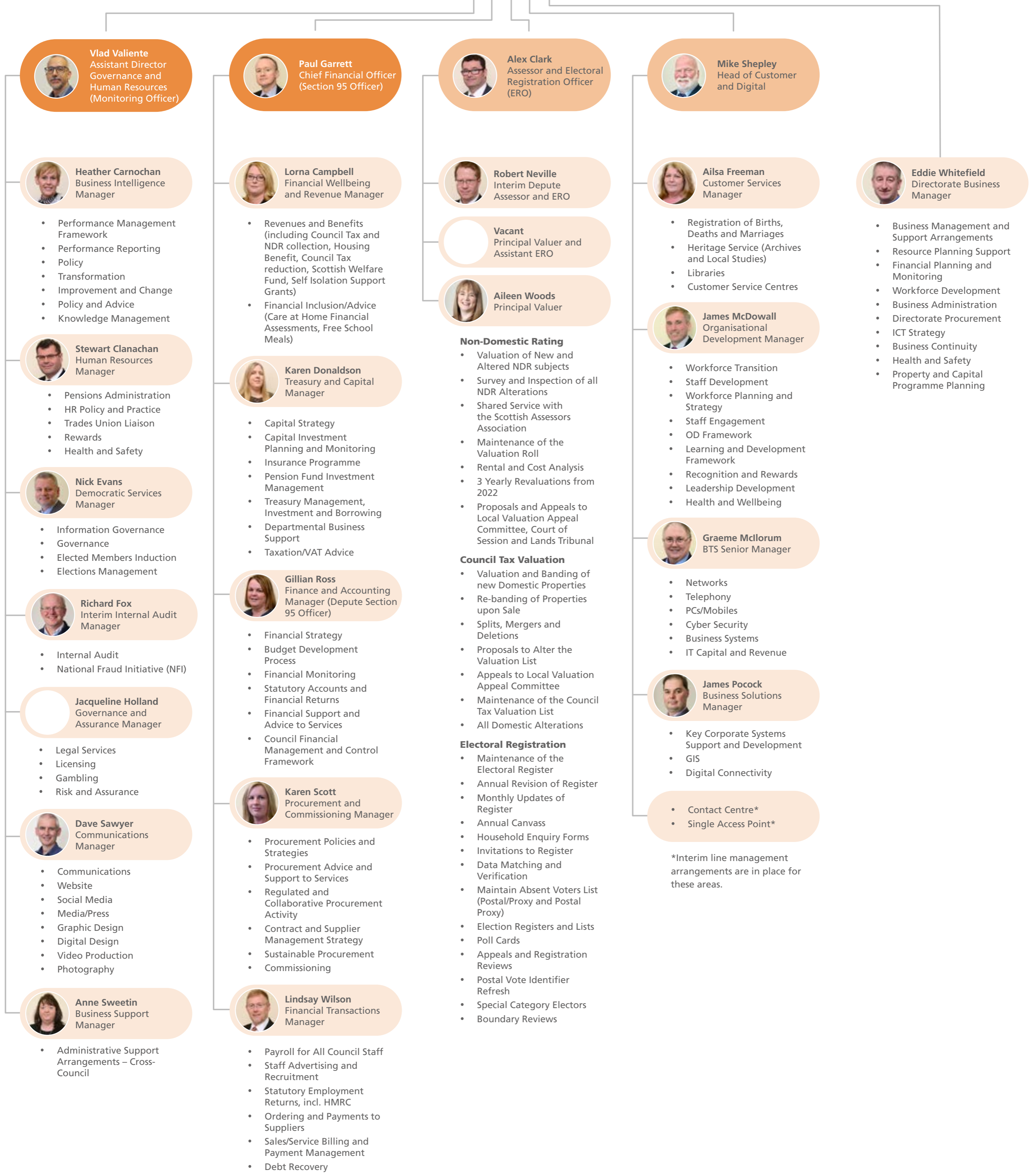
**DGC Senior Leadership Structure**  
Post-1 April 2024

Last updated December 2024

# Enabling and Customer Services



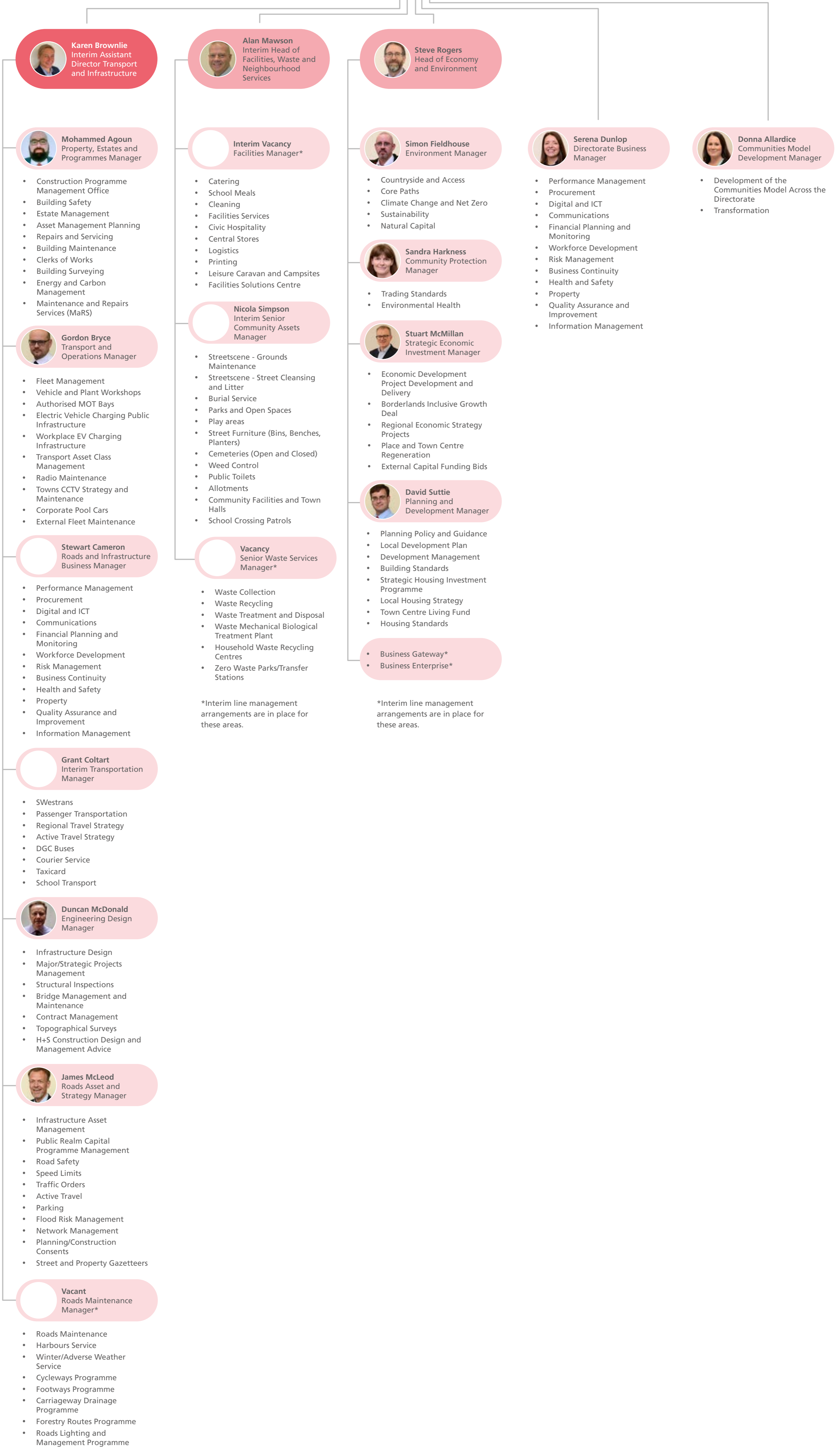
[Return to Chief Officers](#)



# Economy and Infrastructure



[Return to Chief Officers](#)



\*Interim line management arrangements are in place for these areas.

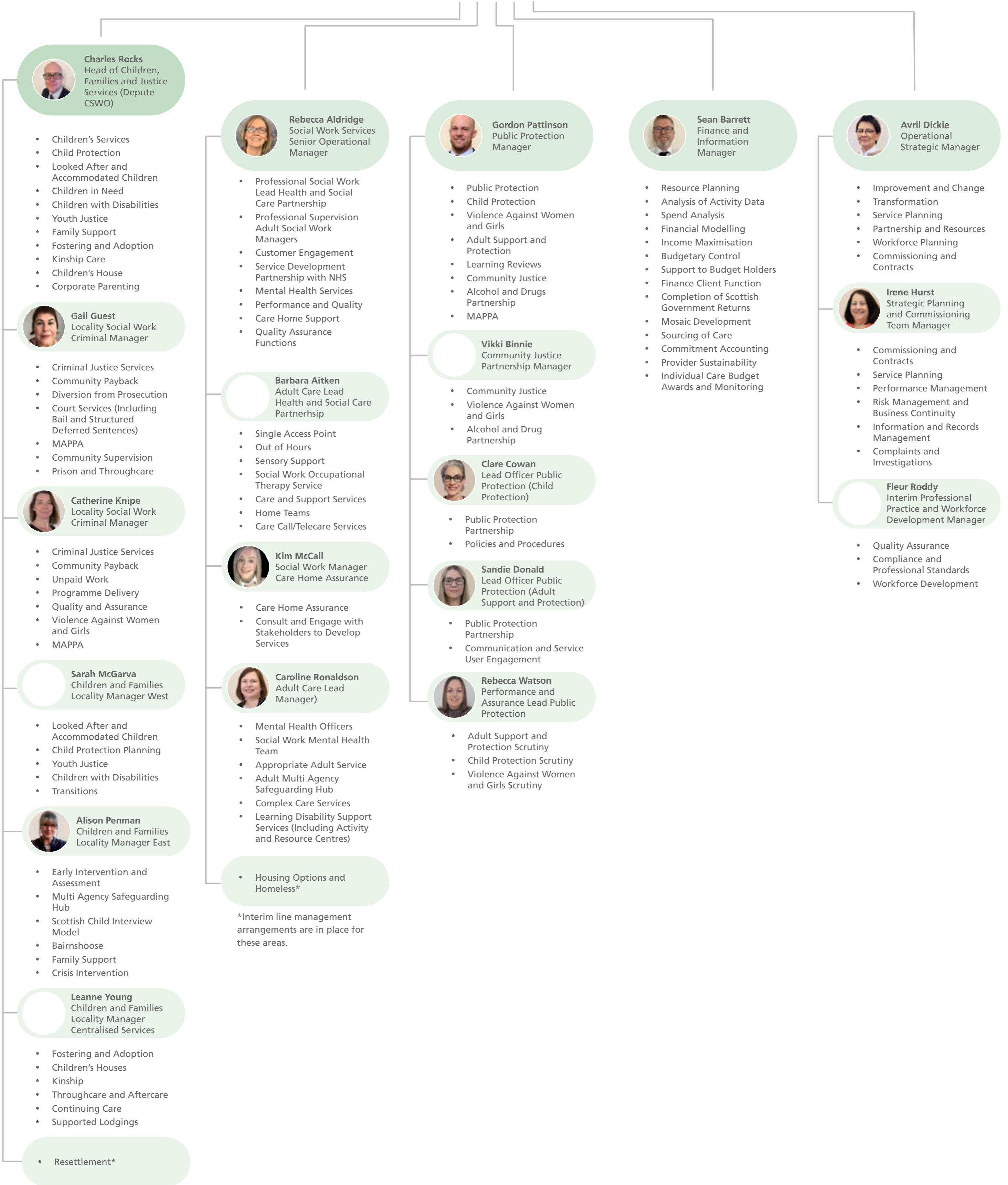
# Education, Skills and Community Wellbeing



# Social Work Services



[Return to Chief Officers](#)



\*Interim line management arrangements are in place for these areas.

\*Interim line management arrangements are in place for these areas.

\*Interim line management arrangements are in place for these areas.

\*Interim line management arrangements are in place for these areas.